



Sierrita Operations  
Environment, Land & Water Department  
6200 W Duval Mine Road  
PO Box 527  
Green Valley, AZ 85622-0527

March 29, 2021

**Via Certified Mail # 7019 1640 0000 7896 7244**  
**Return Receipt Requested**

Oliver Navo  
Arizona Department of Environmental Quality  
Water Quality Compliance Section  
1110 West Washington Street  
Phoenix, Arizona 85007-2935

Re: **Mitigation Order on Consent Docket No. P-50-06**  
**Reporting Year 2020 Mitigation Facilities Monitoring Report**

Dear Mr. Navo:

In accordance with Section 5.1.1 of the Mitigation Plan<sup>1</sup>, Freeport-McMoRan Sierrita Inc. (Sierrita) submits the enclosed *Mitigation Facilities Monitoring Report* for reporting year 2020.

Prior to March 2015, Sierrita has submitted this report annually under the title of *Well Field Operations Monitoring Report*, which Sierrita agreed to submit in the Mitigation Plan approval deferral letter sent to ADEQ on March 18, 2009<sup>2</sup>.

Please do not hesitate to contact me at (520) 393-2014 if you have any questions regarding this submittal.

Sincerely,

William Hart  
Sr. Environmental Scientist

WH:  
20210329\_001

xc: Dave Gosen, Freeport-McMoRan Inc.  
Jim Norris, Clear Creek Associates

<sup>1</sup> Clear Creek Associates. 2013. Mitigation Plan for Sulfate with Respect to Drinking Water Supplies in the Vicinity of the Freeport-McMoRan Sierrita Inc. Tailing Impoundment, Mitigation Order on Consent Docket No. P-50-06. December 18, 2013.

<sup>2</sup> Correspondence from Chad D. Fretz, Sierrita, to Cynthia S. Campbell, ADEQ Water Quality Compliance Section, Re: Mitigation Order on Consent Docket No. P-50-06 - Mitigation Plan. March 18, 2010.

## TECHNICAL MEMORANDUM REPORT



TO: Mr. William Hart, R.G.  
Senior Environmental Scientist  
Freeport--McMoRan Sierrita Inc.  
6200 West Duval Mine Road  
Post Office Box 527  
Green Valley, AZ 85622-0527

FROM: BasinWells Associates, PLLC

PREPARED BY: Buck Schmidt, Principal Hydrologist  
BasinWells Associates, PLLC

REVIEWED BY: Martin J. Rex, R.G.,  
BasinWells Associates, PLLC

DATE: March 25, 2021

PROJECT NO.: 20-006

SUBJECT: 2020 Freeport – McMoran-Sierrita Inc. - Mitigation Facilities Monitoring Report.

---

### 1.0 INTRODUCTION

This Mitigation Facilities Monitoring Report documents groundwater pumping for the Freeport-McMoRan Sierrita Inc. (Sierrita) Sulfate Mitigation Action Well Field (Well Field) under the *Mitigation Plan for Sulfate with Respect to Drinking Water Supplies in the Vicinity of the Freeport-McMoran Sierrita Inc. Tailing Impoundment, Mitigation Order on Consent, Docket No. P-50-06* (Clear Creek Associates PLC, 2013). This report describes wellfield and conveyance operational conditions for calendar year 2020 and consists of data for pumping system availability, well pumping rates, and total system pumping. The actual system pumping is compared to design specifications to assess the mitigation facilities with respect to their mechanical capacity to pump and convey the required volumes of water.

The Well Field consists of two major parts: the Interceptor Well Field and the Mitigation Well Field. The Interceptor Well Field currently consists of 26 active interceptor wells (IWs). The Mitigation Well Field consists of four plume stabilization (PS) wells, four mass capture (MC) wells, and six focused feasibility study (FFS) wells. The PS, MC, and FFS wells were installed between 2011 and 2013 with full operation occurring in early 2014. The locations of the wells of the Well Field are shown on Figure 1. Table 1

**BasinWells Associates PLLC**

tabulates well information including cadastral legal locations; performance and target yield rates; well construction details; completion date and well age.



Figure 1. Sierrita Sulfate Mitigation Action Well Field

**BasinWells Associates PLLC**

**TABLE 1. SIERRITA SULFATE MITIGATION ACTION WELL FIELD CONSTRUCTION INFORMATION**

Well	Cadastral Location	ADWR Reg. No. (55-)	2014-2020 Performance Goal Pumping Rates (gpm)	Target Pumping Rates (gpm)	Well Depth (ft)	Well Dia. (in.)	Borehole Diameter (in.)	Casing Material	Upper Screen Depth (ft bls)	Lower Screen Depth (ft bls)	Pump Gallery?/Interval (ft bls)	Current Pump Setting (ft bls)	Filter Pack Material	Basinfill Alluvium Base Depth (ft bls)	Drill Year	Well Age
IW-1	D-18-13 29DCD	623129	250	250	855	14		STEEL	234	843	No	480	GRAVEL	760	1978	42.7
IW-2A	D-18-13 28CCC	216464	300	300	1051	14	20	STEEL	350	1031	600-640	620	GRAVEL	1020	2008	13.0
IW-3A	D-18-13 28CBC	201732	500	500	1052	14	20	STEEL	400	1030	No	540	GRAVEL	820	2004	17.2
IW-8	D-18-13 28BCC	508236	350	350	783	14	20	STEEL	382	783	No	540	GRAVEL	759	1984	36.7
IW-9	D-18-13 28BCC	508238	200	200	853	14	20	STEEL	412	853	No	605	GRAVEL	740	1984	36.6
IW-4	D-18-13 28BCB	623132	40	40	946	14		STEEL	312	946	No	600	GRAVEL	490	1978	42.7
IW-24	D-18-13 28BBB	200556	50	50	884	14	20	STEEL	348	860	No	602	GRAVEL	410	2004	17.2
IW-5A	D-18-13 28BBB	219131	40	40	900	14.5	20	STAINLESS STEEL	382	890	620-640	630	TACNA	436	2010	10.9
IW-23	D-18-13 21CCB	200555	120	120	964	14	20	STEEL	375	935	No	550	TACNA	420	2004	17.2
IW-10	D-18-13 21CBC	508237	250	250	831	14	20	STEEL	420	831	No	600	GRAVEL	730	1984	36.6
IW-22	D-18-13 21CBC	200554	300	300	590	14	20	STEEL	359	560	No	550	GRAVEL	550	2004	17.2
IW-11	D-18-13 21CBC	508235	325	325	605	14	20	STEEL	371	605	No	500	GRAVEL	563	1984	36.6
IW-6A	D-18-13 21BCC	545565	80	80	497	12	20	STEEL	356	456	No	460	GRAVEL	456	1994	26.3
IW-12	D-18-13 21BCB	545555	125	125	600	12	20	STEEL	358	560	No	560	GRAVEL	498	1994	26.3
IW-13	D-18-13 21BBC	545556	0	0	497	12	20	STEEL	355	456	No	460	GRAVEL	452	1994	26.3
IW-14	D-18-13 21BBB	545557	60	60	549	12	20	STEEL	357	508	No	520	GRAVEL	509	1994	26.3
IW-15	D-18-13 16CCC	545558	40	40	547	12	20	STEEL	357	506	No	505	GRAVEL	507	1995	26.2
IW-19	D-18-13 16BCC	545562	150	150	540	12	20	STEEL	379	499	No	522	GRAVEL	498	1995	26.1
IW-20	D-18-13 16BCB	545563	0	0	502	12	20	STEEL	380	460	No	460	GRAVEL	470	1995	26.1
IW-21	D-18-13 16BBC	545564	100	100	601	12	20	STEEL	400	560	No	520	GRAVEL	520	1995	26.1
IW-25	D-18-13 28CBD	219596	400	400	782	16	24	STAINLESS STEEL	359	720	No	732	SILICA SAND	475	2010	10.4
IW-26	D-18-13 28BCD	219143	350	350	780	16	24	STAINLESS STEEL	340	720	No	732	SILICA SAND	475	2010	10.4
IW-27	D-18-13 28BBD	219136	100	100	720	14	22	STAINLESS STEEL	380	660	No	672	SILICA SAND	465	2010	10.4
IW-28	D-18-13 21CCA	219137	400	400	760	16	24	STAINLESS STEEL	380	700	No	712	SILICA SAND	680	2010	10.4
IW-29	D-18-13 21CDA	222865	-	-	770	16.62	24	STAINLESS STEEL	440	730	No		SILICA SAND	730	2014	6.9
PS-1	D-18-13 03BBA	220861	700	700	1020	16.62	24	HSLA	560	980	640-680	890	SILICA SAND	914	2011	9.3
PS-2	D-17-13 34CDC	220862	800	800	1130	16.62	24	HSLA	560	1090	640-680	870	SILICA SAND	1090	2012	8.8
PS-3	D-17-13 34CDD	220863	800	800	1200	16.62	24	HSLA	520	1160	600-640		SILICA SAND	1160	2012	8.9
PS-4	D-18-13 03BCA	220864	1000	1000	1060	16.62	24	HSLA	560	1020	640-680	893	SILICA SAND	1020	2012	8.8
MC-1	D-18-13 16DAA	221660	0	900	915	16.62	24	HSLA	479	875	599-639	824	SILICA SAND	875	2013	7.9
MC-2	D-18-13 10CCB	221761	0	700	980	16.62	24	HSLA	479	940	600-640	855	SILICA SAND	940	2013	8.1
MC-3	D-18-13 09AAA	221661	750	600	870	16.62	24	HSLA	530	810	No	830	SILICA SAND	810	2012	8.4
MC-4	D-18-13 04DDC	220842	600	600	830	16.62	24	HSLA	560	770	No	810	SILICA SAND	770	2012	8.7
FFS-1	D-18-13 21ABC	221662	338	800	790	16.62	24	HSLA	448	729	No	753	SILICA SAND	730	2013	8.0
FFS-2	D-18-13 16DCA	221663	300	700	750	16.62	24	HSLA	470	690	No	703	SILICA SAND	680	2013	8.0
FFS-3	D-18-13 16ACD	221664	225	400	800	16.62	24	HSLA	510	740	No	762	SILICA SAND	736	2013	8.2
FFS-4	D-18-13 16ABA	221665	150	200	871	16.62	24	HSLA	540	830	640-680	788	SILICA SAND	830	2012	8.2
FFS-5	D-18-13 09DBA	221666	225	1000	800	16.62	24	HSLA	569	739	No	775	SILICA SAND	740	2012	8.3
FFS-6	D-18-13 09ACA	221667	225	600	830	16.62	24	HSLA	528	769	No	750	SILICA SAND	770	2012	8.3

Notes: ft bls = feet below land surface; in. = inches; HSLA = High Strength Low Alloy Steel

**2.0 WELL FIELD OPERATIONS**

Total groundwater withdrawals in 2020 of the Well Field are tabulated on Table 2. The well field withdrew approximately 16,661 acre-feet (AF) of groundwater in 2020 (average pumping rate of 10,330 gpm).

<b>TABLE 2. 2020 SIERRITA SULFATE MITIGATION ACTION WELL FIELD TOTAL GROUNDWATER WITHDRAWAL</b>	
<b>Total Gallons Pumped:</b>	<b>5,429,349,798</b>
<b>Total Acre-Feet Pumped:</b>	<b>16,661</b>

The Well Field, in total, produced approximately 97.1 percent of the performance goals with respect to potential total groundwater withdrawal considering the 2014-2020 performance goal rates (Table 1) at a 100% duty cycle (total pumping rate of 10,643 gpm or 17,166 AF).

The Well Field, in total, produced approximately 72.1 percent of the target goals with respect to potential total groundwater withdrawal considering the target goal rates (Table 1) at a 100% duty cycle (total pumping rate of 14,330 gpm or 23,113 AF).

Well performance in 2020 on a well-by-well basis is tabulated in Attachment A. Run time percentages of the Interceptor Well Field wells ranged from 31 to 95 percent when active. Run time percentages of the Mitigation Well Field wells ranged from 34 to 96 percent with the exception of FFS-6 which was offline the entire year due to a well casing issue. IW-5A, IW-6A, IW-13, IW-14, IW-15, and IW-20 have zero runtime percentages in 2020 due to low flow conditions and are not considered for re-activation and will be used as monitor wells. (See Table 1. Both IW-13 and IW-20 have target and performance goals of 0 gpm.) IW-4, IW-24, IW-23, IW-10, and IW-21 have zero to minimum runtime percentages in 2020 due to pump equipment issues.

Shutdown of wells was required due the following:

- As needed well and transmission line maintenance activities,
- Perform non-pumping monitoring activities,
- Pipeline relocations during Sierrita Tailings Impoundment buttress construction,
- Exceedance of storage capacity of the Mill Reservoir.
- Increased barge pumping to reduce size of tailings reclamation pond.

Well field data plots including a well construction diagram; static and pumping water levels; yield rates; calculated specific capacity; sulfate concentrations; static saturated thickness of basin fill alluvium; and annotated descriptions of maintenance activities from 2011 to 2021 are included in Attachment B.

**3.0 SUMMARY OF WELL MAINTENANCE ACTIVITIES**

Summary of well and pump maintenance activities performed in 2020 are tabulated on Table 3 below. All maintenance activities were performed following collection and evaluation of maintenance monitoring



parameters as described in the *Sulfate Mitigation Action Well Field (Well Field) Operation and Maintenance Plan* (BasinWells, 2013).

<b>TABLE 3. 2020 SIERRITA MITIGATION ACTION WELL FIELD SUMMARY OF WELL AND PUMP MAINTENANCE ACTIVITIES</b>		
<b>Well</b>	<b>Approx. Months Off Line for Maintenance and/or Evaluation</b>	<b>Maintenance Activities</b>
IW-8	Feb-Aug	Well rehabilitated and pump rebuilt
IW-9	Apr	Well rehabilitated and pump rebuilt
IW-4	Jan-Dec	<b>Well to be rehabilitated and pump rebuilt or replaced</b>
IW-24	Jan-Dec	<b>Well to be rehabilitated and pump rebuilt or replaced</b>
IW-5A	Jan-Dec	Well out of service; monitor well
IW-23	Jan-Dec	<b>Well to be rehabilitated and pump rebuilt or replaced</b>
IW-10	Jan-Dec	<b>Well to be rehabilitated and pump rebuilt or replaced</b>
IW-6A	Jan-Dec	Well out of service; monitor well
IW-12	Oct-Dec	<b>Well to be rehabilitated and pump rebuilt or replaced</b>
IW-13	Jan-Dec	Well out of service; monitor well
IW-14	Jan-Dec	Well out of service; monitor well
IW-15	Jan-Dec	Well out of service; monitor well
IW-19	Mar	Well rehabilitated and pump rebuilt
IW-20	Jan-Dec	Well out of service; monitor well
IW-21	Jan-Dec	<b>Well to be rehabilitated and pump rebuilt or replaced</b>
IW-25	Jun	Well rehabilitated and pump rebuilt
IW-28	Apr	Well rehabilitated and pump rebuilt
IW-29	Dec	Well rehabilitated and pump rebuilt
PS-4	Dec	Well rehabilitated and pump rebuilt
FFS-2	Jan	Power issue, resolved
FFS-5	Jan-Jul	Gravel pack in discharge, well casing failure, well rehabilitated
FFS-6	Jan-Dec	<b>Gravel pack in discharge, well casing failure suspected, under eval.</b>

**4.0 FUTURE MAINTENANCE ACTIVITIES**

Future maintenance activities will continue to adhere to activities and frequencies as described in *Sulfate Mitigation Action Well Field (Well Field) Operation and Maintenance Plan* (BasinWells, 2013). All maintenance activities to be performed following collection and evaluation of maintenance monitoring parameters.

Pump equipment in IW-4, IW-24, IW-23, IW-10, IW-12, and IW-21 have downhole pump issues and will be evaluated and likely refurbished in 2021. FFS-6 has a well casing issue revealed by gravel pack material in discharge and will be evaluated and likely refurbished in 2021 as well.



## 5.0 REFERENCES

BasinWells Associates, PLLC, *Freeport-McMoran Sierrita Inc., Sulfate Mitigation Action Well Field (Well Field) Operation and Maintenance Plan*, December 31, 2013.

Clear Creek Associates, PLC, *Mitigation Plan for Sulfate With Respect to Drinking Water Supplies in the Vicinity of the Freeport-McMoran Sierrita Inc. Tailing Impoundment, Mitigation Order on Consent, Docket No. P-50-06*, December 18, 2013.

**BasinWells Associates PLLC**

ATTACHMENT A

---

**SIERRITA SULFATE MITIGATION ACTION WELL FIELD PERFORMANCE SUMMARY**

**BasinWells Associates PLLC**



**ATTACHMENT A.  
SUMMARY OF 2020 INTERCEPTOR WELL PERFORMANCE  
FREEPORT MCMORAN SIERRITA, INC.**

Well	Month	Gallons Pumped	Estimated Hours	Yield (Acrefeet)	Approx. Yield Rate (gpm)
IW-1	Jan	13,970,619	746	42.9	312
	Feb	12,840,080	686	39.4	312
	Mar	13,148,088	702	40.4	312
	Apr	12,854,550	687	39.5	312
	May	12,839,477	686	39.4	312
	Jun	12,582,373	672	38.6	312
	Jul	12,829,020	685	39.4	312
	Aug	11,760,609	628	36.1	312
	Sep	12,611,817	674	38.7	312
	Oct	11,563,501	618	35.5	312
	Nov	11,629,108	621	35.7	312
	Dec	12,374,679	661	38.0	312

IW-1 Total Gallons Pumped:	151,009,921
IW-1 Total Acre-Feet Pumped:	463
IW-1 Average Yield Rate (gpm):	312
IW-1 % Run Time:	92.1%

Well	Month	Gallons Pumped	Estimated Hours	Yield (Acrefeet)	Approx. Yield Rate (gpm)
IW-2A	Jan	8,841,813	737	27.1	200
	Feb	8,348,370	696	25.6	200
	Mar	8,339,907	695	25.6	200
	Apr	7,979,004	665	24.5	200
	May	7,988,382	666	24.5	200
	Jun	7,832,490	653	24.0	200
	Jul	7,930,236	661	24.3	200
	Aug	7,338,135	612	22.5	200
	Sep	8,092,075	674	24.8	200
	Oct	7,180,459	598	22.0	200
	Nov	6,919,068	577	21.2	200
	Dec	7,245,406	604	22.2	200

IW-2A Total Gallons Pumped:	94,035,945
IW-2A Total Acre-Feet Pumped:	289
IW-2A Average Yield Rate (gpm):	200
IW-2A % Run Time:	89.5%

Well	Month	Gallons Pumped	Estimated Hours	Yield (Acrefeet)	Approx. Yield Rate (gpm)*
IW-3A	Jan	11,891,500	343	36.5	578
	Feb	21,039,468	607	64.6	578
	Mar	20,745,199	598	63.7	578
	Apr	23,245,965	670	71.3	578
	May	25,352,347	731	77.8	578
	Jun	24,975,138	720	76.6	578
	Jul	25,310,047	730	77.7	578
	Aug	18,020,938	520	55.3	578
	Sep	14,032,553	405	43.1	578
	Oct	5,474,563	158	16.8	578
	Nov	10,875,052	314	33.4	578
	Dec	4,737,009	137	14.5	578

IW-3A Total Gallons Pumped:	205,699,779
IW-3A Total Acre-Feet Pumped:	631
IW-3A Average Yield Rate (gpm):	578
IW-3A % Run Time:	67.7%

Well	Month	Gallons Pumped	Estimated Hours	Yield (Acrefeet)	Approx. Yield Rate (gpm)
IW-8	Jan	16,247,188	680	49.9	398
	Feb	1,290,946	54	4.0	398
	Mar	0	0	0.0	0
	Apr	0	0	0.0	0
	May	0	0	0.0	0
	Jun	0	0	0.0	0
	Jul	0	0	0.0	0
	Aug	0	0	0.0	0
	Sep	3,620,412	152	11.1	398
	Oct	10,394,551	435	31.9	398
	Nov	16,236,449	680	49.8	398
	Dec	17,014,528	713	52.2	398

IW-8 Total Gallons Pumped:	64,804,074
IW-8 Total Acre-Feet Pumped:	199
IW-8 Average Yield Rate (gpm):	398
IW-8 % Run Time:	31.0%

Well	Month	Gallons Pumped	Estimated Hours	Yield (Acrefeet)	Approx. Yield Rate (gpm)
IW-9	Jan	7,957,563	717	24.4	185
	Feb	7,060,196	636	21.7	185
	Mar	5,059,028	456	15.5	185
	Apr	0	0	0.0	0
	May	745,129	67	2.3	185
	Jun	8,026,294	723	24.6	185
	Jul	8,220,938	741	25.2	185
	Aug	7,557,092	681	23.2	185
	Sep	7,711,148	695	23.7	185
	Oct	3,319,282	299	10.2	185
	Nov	7,428,617	669	22.8	185
	Dec	7,703,121	694	23.6	185

IW-9 Total Gallons Pumped:	70,788,408
IW-9 Total Acre-Feet Pumped:	217
IW-9 Average Yield Rate (gpm):	185
IW-9 % Run Time:	72.8%

Well	Month	Gallons Pumped	Estimated Hours	Yield (Acrefeet)	Approx. Yield Rate (gpm)
IW-4	Jan	0	0	0.0	0
	Feb	0	0	0.0	0
	Mar	0	0	0.0	0
	Apr	0	0	0.0	0
	May	0	0	0.0	0
	Jun	0	0	0.0	0
	Jul	0	0	0.0	0
	Aug	0	0	0.0	0
	Sep	0	0	0.0	0
	Oct	0	0	0.0	0
	Nov	0	0	0.0	0
	Dec	0	0	0.0	0

IW-4 Total Gallons Pumped:	0
IW-4 Total Acre-Feet Pumped:	0
IW-4 Average Yield Rate (gpm):	0
IW-4 % Run Time:	0.0%

Well	Month	Gallons Pumped	Estimated Hours	Yield (Acrefeet)	Approx. Yield Rate (gpm)
IW-24	Jan	0	0	0.0	0
	Feb	0	0	0.0	0
	Mar	0	0	0.0	0
	Apr	0	0	0.0	0
	May	0	0	0.0	0
	Jun	0	0	0.0	0
	Jul	0	0	0.0	0
	Aug	0	0	0.0	0
	Sep	0	0	0.0	0
	Oct	0	0	0.0	0
	Nov	0	0	0.0	0
	Dec	0	0	0.0	0

IW-24 Total Gallons Pumped:	0
IW-24 Total Acre-Feet Pumped:	0
IW-24 Average Yield Rate (gpm):	0
IW-24 % Run Time:	0.0%

Well	Month	Gallons Pumped	Estimated Hours	Yield (Acrefeet)	Approx. Yield Rate (gpm)
IW-5A	Jan	0	0	0.0	0
	Feb	0	0	0.0	0
	Mar	0	0	0.0	0
	Apr	0	0	0.0	0
	May	0	0	0.0	0
	Jun	0	0	0.0	0
	Jul	0	0	0.0	0
	Aug	0	0	0.0	0
	Sep	0	0	0.0	0
	Oct	0	0	0.0	0
	Nov	0	0	0.0	0
	Dec	0	0	0.0	0

IW-5A Total Gallons Pumped:	0
IW-5A Total Acre-Feet Pumped:	0
IW-5A Average Yield Rate (gpm):	0
IW-5A % Run Time:	0.0%



**ATTACHMENT A.  
SUMMARY OF 2020 INTERCEPTOR WELL PERFORMANCE  
FREEPORT MCMORAN SIERRITA, INC.**

Well	Month	Gallons Pumped	Estimated Hours	Yield (Acrefeet)	Approx. Yield Rate (gpm)
IW-23	Jan	0	0	0.0	0
	Feb	0	0	0.0	0
	Mar	0	0	0.0	0
	Apr	0	0	0.0	0
	May	0	0	0.0	0
	Jun	0	0	0.0	0
	Jul	0	0	0.0	0
	Aug	0	0	0.0	0
	Sep	0	0	0.0	0
	Oct	0	0	0.0	0
	Nov	0	0	0.0	0
	Dec	0	0	0.0	0

IW-23 Total Gallons Pumped:	0
IW-23 Total Acre-Feet Pumped:	0
IW-23 Average Yield Rate (gpm):	0
IW-23 % Run Time:	0.0%

Well	Month	Gallons Pumped	Estimated Hours	Yield (Acrefeet)	Approx. Yield Rate (gpm)
IW-10	Jan	0	0	0.0	0
	Feb	0	0	0.0	0
	Mar	0	0	0.0	0
	Apr	0	0	0.0	0
	May	0	0	0.0	0
	Jun	0	0	0.0	0
	Jul	0	0	0.0	0
	Aug	0	0	0.0	0
	Sep	0	0	0.0	0
	Oct	0	0	0.0	0
	Nov	0	0	0.0	0
	Dec	6,141	0	0.0	290

IW-10 Total Gallons Pumped:	1,000
IW-10 Total Acre-Feet Pumped:	0
IW-10 Average Yield Rate (gpm):	290
IW-10 % Run Time:	0.0%

Well	Month	Gallons Pumped	Estimated Hours	Yield (Acrefeet)	Approx. Yield Rate (gpm)
IW-22	Jan	15,884,563	744	48.7	356
	Feb	14,074,611	659	43.2	356
	Mar	15,279,601	715	46.9	356
	Apr	15,183,706	711	46.6	356
	May	15,228,767	713	46.7	356
	Jun	14,396,273	674	44.2	356
	Jul	14,698,894	688	45.1	356
	Aug	13,191,591	618	40.5	356
	Sep	14,152,516	663	43.4	356
	Oct	13,114,679	614	40.2	356
	Nov	12,602,372	590	38.7	356
	Dec	13,756,730	644	42.2	356

IW-22 Total Gallons Pumped:	171,564,303
IW-22 Total Acre-Feet Pumped:	526
IW-22 Average Yield Rate (gpm):	356
IW-22 % Run Time:	91.7%

Well	Month	Gallons Pumped	Estimated Hours	Yield (Acrefeet)	Approx. Yield Rate (gpm)
IW-11	Jan	11,708,500	745	35.9	262
	Feb	10,345,680	658	31.8	262
	Mar	11,400,406	725	35.0	262
	Apr	10,810,680	688	33.2	262
	May	7,149,104	455	21.9	262
	Jun	11,322,558	720	34.8	262
	Jul	11,722,103	746	36.0	262
	Aug	10,608,346	675	32.6	262
	Sep	11,279,434	718	34.6	262
	Oct	9,581,795	610	29.4	262
	Nov	8,200,217	522	25.2	262
	Dec	7,886,838	502	24.2	262

IW-11 Total Gallons Pumped:	122,015,661
IW-11 Total Acre-Feet Pumped:	374
IW-11 Average Yield Rate (gpm):	262
IW-11 % Run Time:	88.6%

Well	Month	Gallons Pumped	Estimated Hours	Yield (Acrefeet)	Approx. Yield Rate (gpm)
IW-6A	Jan	0	0	0.0	0
	Feb	0	0	0.0	0
	Mar	0	0	0.0	0
	Apr	0	0	0.0	0
	May	0	0	0.0	0
	Jun	0	0	0.0	0
	Jul	0	0	0.0	0
	Aug	0	0	0.0	0
	Sep	0	0	0.0	0
	Oct	0	0	0.0	0
	Nov	0	0	0.0	0
	Dec	0	0	0.0	0

IW-6A Total Gallons Pumped:	0
IW-6A Total Acre-Feet Pumped:	0
IW-6A Average Yield Rate (gpm):	0
IW-6A % Run Time:	0.0%

Well	Month	Gallons Pumped*	Estimated Hours	Yield (Acrefeet)	Approx. Yield Rate (gpm)
IW-12	Jan	5,279,188	746	16.2	118
	Feb	4,663,625	659	14.3	118
	Mar	5,043,012	712	15.5	118
	Apr	4,974,233	703	15.3	118
	May	4,994,475	705	15.3	118
	Jun	4,697,531	663	14.4	118
	Jul	4,783,827	676	14.7	118
	Aug	4,383,617	619	13.5	118
	Sep	3,277,047	463	10.1	118
	Oct	0	0	0.0	0
	Nov	0	0	0.0	0
	Dec	0	0	0.0	0

IW-12 Total Gallons Pumped:	42,096,555
IW-12 Total Acre-Feet Pumped:	129
IW-12 Average Yield Rate (gpm):	118
IW-12 % Run Time:	67.9%

Well	Month	Gallons Pumped	Estimated Hours	Yield (Acrefeet)	Approx. Yield Rate (gpm)
IW-13	Jan	0	0	0.0	0
	Feb	0	0	0.0	0
	Mar	0	0	0.0	0
	Apr	0	0	0.0	0
	May	0	0	0.0	0
	Jun	0	0	0.0	0
	Jul	0	0	0.0	0
	Aug	0	0	0.0	0
	Sep	0	0	0.0	0
	Oct	0	0	0.0	0
	Nov	0	0	0.0	0
	Dec	0	0	0.0	0

IW-13 Total Gallons Pumped:	0
IW-13 Total Acre-Feet Pumped:	0
IW-13 Average Yield Rate (gpm):	0
IW-13 % Run Time:	0.0%

Well	Month	Gallons Pumped	Estimated Hours	Yield (Acrefeet)	Approx. Yield Rate (gpm)
IW-14	Jan	1,000	0	0.0	60
	Feb	1,000	0	0.0	60
	Mar	0	0	0.0	0
	Apr	0	0	0.0	0
	May	0	0	0.0	0
	Jun	0	0	0.0	0
	Jul	0	0	0.0	0
	Aug	0	0	0.0	0
	Sep	0	0	0.0	0
	Oct	0	0	0.0	0
	Nov	0	0	0.0	0
	Dec	0	0	0.0	0

IW-14 Total Gallons Pumped:	2,000
IW-14 Total Acre-Feet Pumped:	0
IW-14 Average Yield Rate (gpm):	60
IW-14 % Run Time:	0.0%



**ATTACHMENT A.  
SUMMARY OF 2020 INTERCEPTOR WELL PERFORMANCE  
FREEPORT MCMORAN SIERRITA, INC.**

Well	Month	Gallons Pumped	Estimated Hours	Yield (Acrefeet)	Approx. Yield Rate (gpm)
IW-15	Jan	0	0	0.0	0
	Feb	0	0	0.0	0
	Mar	0	0	0.0	0
	Apr	0	0	0.0	0
	May	0	0	0.0	0
	Jun	0	0	0.0	0
	Jul	0	0	0.0	0
	Aug	0	0	0.0	0
	Sep	0	0	0.0	0
	Oct	0	0	0.0	0
	Nov	0	0	0.0	0
	Dec	0	0	0.0	0

IW-15 Total Gallons Pumped:	0
IW-15 Total Acre-Feet Pumped:	0
IW-15 Average Yield Rate (gpm):	0
IW-15 % Run Time:	0.0%

Well	Month	Gallons Pumped	Estimated Hours	Yield (Acrefeet)	Approx. Yield Rate (gpm)
IW-19	Jan	6,346,672	725	19.5	146
	Feb	6,113,206	698	18.8	146
	Mar	0	0	0.0	0
	Apr	5,358,660	612	16.4	146
	May	5,418,323	619	16.6	146
	Jun	5,906,128	674	18.1	146
	Jul	6,183,573	706	19.0	146
	Aug	5,408,489	617	16.6	146
	Sep	5,844,446	667	17.9	146
	Oct	5,276,349	602	16.2	146
	Nov	5,114,285	584	15.7	146
	Dec	5,503,538	628	16.9	146

IW-19 Total Gallons Pumped:	62,473,669
IW-19 Total Acre-Feet Pumped:	192
IW-19 Average Yield Rate (gpm):	146
IW-19 % Run Time:	81.4%

Well	Month	Gallons Pumped	Estimated Hours	Yield (Acrefeet)	Approx. Yield Rate (gpm)
IW-20	Jan	0	0	0.0	0
	Feb	0	0	0.0	0
	Mar	0	0	0.0	0
	Apr	0	0	0.0	0
	May	0	0	0.0	0
	Jun	0	0	0.0	0
	Jul	0	0	0.0	0
	Aug	0	0	0.0	0
	Sep	0	0	0.0	0
	Oct	0	0	0.0	0
	Nov	0	0	0.0	0
	Dec	0	0	0.0	0

IW-20 Total Gallons Pumped:	0
IW-20 Total Acre-Feet Pumped:	0
IW-20 Average Yield Rate (gpm):	0
IW-20 % Run Time:	0.0%

Well	Month	Gallons Pumped	Estimated Hours	Yield (Acrefeet)	Approx. Yield Rate (gpm)
IW-21	Jan	0	0	0.0	0
	Feb	0	0	0.0	0
	Mar	0	0	0.0	0
	Apr	0	0	0.0	0
	May	0	0	0.0	0
	Jun	0	0	0.0	0
	Jul	0	0	0.0	0
	Aug	0	0	0.0	0
	Sep	0	0	0.0	0
	Oct	0	0	0.0	0
	Nov	0	0	0.0	0
	Dec	0	0	0.0	0

IW-21 Total Gallons Pumped:	0
IW-21 Total Acre-Feet Pumped:	0
IW-21 Average Yield Rate (gpm):	0
IW-21 % Run Time:	0.0%

Well	Month	Gallons Pumped	Estimated Hours	Yield (Acrefeet)	Approx. Yield Rate (gpm)
IW-25	Jan	19,561,000	653	60.0	499
	Feb	16,890,333	564	51.8	499
	Mar	17,980,522	601	55.2	499
	Apr	17,472,063	584	53.6	499
	May	10,002,909	334	30.7	499
	Jun	0	0	0.0	0
	Jul	6,041,975	202	18.5	499
	Aug	18,898,590	631	58.0	499
	Sep	21,626,469	722	66.4	499
	Oct	17,523,218	585	53.8	499
	Nov	17,853,137	596	54.8	499
	Dec	19,538,899	653	60.0	499

IW-25 Total Gallons Pumped:	183,389,115
IW-25 Total Acre-Feet Pumped:	563
IW-25 Average Yield Rate (gpm):	499
IW-25 % Run Time:	69.9%

Well	Month	Gallons Pumped	Estimated Hours	Yield (Acrefeet)	Approx. Yield Rate (gpm)
IW-26	Jan	10,570,875	747	32.4	236
	Feb	9,503,872	671	29.2	236
	Mar	10,296,668	727	31.6	236
	Apr	10,074,668	711	30.9	236
	May	10,180,476	719	31.2	236
	Jun	9,898,653	699	30.4	236
	Jul	10,150,148	717	31.2	236
	Aug	9,347,374	660	28.7	236
	Sep	9,906,613	700	30.4	236
	Oct	8,761,620	619	26.9	236
	Nov	8,919,724	630	27.4	236
	Dec	9,668,145	683	29.7	236

IW-26 Total Gallons Pumped:	117,278,836
IW-26 Total Acre-Feet Pumped:	360
IW-26 Average Yield Rate (gpm):	236
IW-26 % Run Time:	94.5%

Well	Month	Gallons Pumped	Estimated Hours	Yield (Acrefeet)	Approx. Yield Rate (gpm)
IW-27	Jan	9,050,594	747	27.8	202
	Feb	7,992,789	659	24.5	202
	Mar	8,716,128	719	26.8	202
	Apr	8,426,666	695	25.9	202
	May	8,329,408	687	25.6	202
	Jun	7,413,598	612	22.8	202
	Jul	6,022,884	497	18.5	202
	Aug	7,854,515	648	24.1	202
	Sep	8,408,854	694	25.8	202
	Oct	7,161,821	591	22.0	202
	Nov	6,891,798	569	21.2	202
	Dec	7,541,161	622	23.1	202

IW-27 Total Gallons Pumped:	93,810,216
IW-27 Total Acre-Feet Pumped:	288
IW-27 Average Yield Rate (gpm):	202
IW-27 % Run Time:	88.4%

Well	Month	Gallons Pumped	Estimated Hours	Yield (Acrefeet)	Approx. Yield Rate (gpm)
IW-28	Jan	14,860,000	673	45.6	368
	Feb	12,651,189	573	38.8	368
	Mar	633,150	29	1.9	368
	Apr	0	0	0.0	0
	May	22,686	1	0.1	368
	Jun	12,034,324	545	36.9	368
	Jul	16,409,498	743	50.4	368
	Aug	14,962,409	678	45.9	368
	Sep	15,921,379	721	48.9	368
	Oct	13,857,834	628	42.5	368
	Nov	14,461,655	655	44.4	368
	Dec	15,852,331	718	48.7	368

IW-28 Total Gallons Pumped:	131,666,455
IW-28 Total Acre-Feet Pumped:	404
IW-28 Average Yield Rate (gpm):	368
IW-28 % Run Time:	68.1%



**ATTACHMENT A.  
SUMMARY OF 2020 INTERCEPTOR WELL PERFORMANCE  
FREEPORT MCMORAN SIERRITA, INC.**

Well	Month	Gallons Pumped	Estimated Hours	Yield (Acrefeet)	Approx. Yield Rate (gpm)
IW-29	Jan	31,196,500	743	95.7	700
	Feb	16,709,750	398	51.3	700
	Mar	16,091,741	383	49.4	700
	Apr	19,140,914	456	58.7	700
	May	19,217,100	458	59.0	700
	Jun	16,949,553	404	52.0	700
	Jul	18,858,726	449	57.9	700
	Aug	17,556,079	418	53.9	700
	Sep	18,066,403	430	55.4	700
	Oct	14,236,090	339	43.7	700
	Nov	4,320,889	103	13.3	700
	Dec	0	0	0.0	0

IW-29 Total Gallons Pumped:	192,848,745
IW-29 Total Acre-Feet Pumped:	590
IW-29 Average Yield Rate (gpm):	700
IW-29 % Run Time:	52.3%

Well	Month	Gallons Pumped	Estimated Hours	Yield (Acrefeet)	Approx. Yield Rate (gpm)
PS-1	Jan	37,612,095	740	115.4	847
	Feb	35,464,894	698	108.8	847
	Mar	35,839,837	705	110.0	847
	Apr	34,025,661	670	104.4	847
	May	34,890,918	687	107.1	847
	Jun	34,599,343	681	106.2	847
	Jul	35,711,024	703	109.6	847
	Aug	34,121,039	671	104.7	847
	Sep	34,239,140	674	105.1	847
	Oct	33,685,519	663	103.4	847
	Nov	33,568,880	661	103.0	847
	Dec	35,299,727	695	108.3	847

PS-1 Total Gallons Pumped:	419,058,077
PS-1 Total Acre-Feet Pumped:	1286
PS-1 Average Yield Rate (gpm):	847
PS-1 % Run Time:	94.1%

Well	Month	Gallons Pumped	Estimated Hours	Yield (Acrefeet)	Approx. Yield Rate (gpm)
PS-2	Jan	37,977,250	745	116.5	850
	Feb	35,569,746	697	109.2	850
	Mar	36,816,551	722	113.0	850
	Apr	35,627,278	699	109.3	850
	May	35,813,003	702	109.9	850
	Jun	35,450,164	695	108.8	850
	Jul	36,585,468	717	112.3	850
	Aug	35,189,973	690	108.0	850
	Sep	34,799,594	682	106.8	850
	Oct	34,412,245	675	105.6	850
	Nov	34,458,265	676	105.7	850
	Dec	36,012,311	706	110.5	850

PS-2 Total Gallons Pumped:	428,711,848
PS-2 Total Acre-Feet Pumped:	1316
PS-2 Average Yield Rate (gpm):	850
PS-2 % Run Time:	96.0%

Well	Month	Gallons Pumped	Estimated Hours	Yield (Acrefeet)	Approx. Yield Rate (gpm)
PS-3	Jan	41,625,000	664	127.7	1045
	Feb	9,054,794	144	27.8	1045
	Mar	40,126,443	640	123.1	1045
	Apr	45,000,626	718	138.1	1045
	May	45,161,786	720	138.6	1045
	Jun	44,972,667	717	138.0	1045
	Jul	46,430,067	741	142.5	1045
	Aug	43,505,786	694	133.5	1045
	Sep	44,706,939	713	137.2	1045
	Oct	43,567,955	695	133.7	1045
	Nov	43,429,496	693	133.3	1045
	Dec	45,625,364	728	140.0	1045

PS-3 Total Gallons Pumped:	493,206,923
PS-3 Total Acre-Feet Pumped:	1513
PS-3 Average Yield Rate (gpm):	1045
PS-3 % Run Time:	89.8%

Well	Month	Gallons Pumped	Estimated Hours	Yield (Acrefeet)	Approx. Yield Rate (gpm)
PS-4	Jan	48,551,750	736	149.0	1100
	Feb	45,792,973	694	140.5	1100
	Mar	46,744,595	708	143.4	1100
	Apr	45,798,576	694	140.5	1100
	May	45,725,094	693	140.3	1100
	Jun	45,827,010	694	140.6	1100
	Jul	46,535,869	705	142.8	1100
	Aug	43,100,255	653	132.3	1100
	Sep	41,732,429	632	128.1	1100
	Oct	38,838,641	588	119.2	1100
	Nov	10,513,643	159	32.3	1100
	Dec	0	0	0.0	1100

PS-4 Total Gallons Pumped:	459,160,835
PS-4 Total Acre-Feet Pumped:	1409
PS-4 Average Yield Rate (gpm):	1100
PS-4 % Run Time:	79.4%

Well	Month	Gallons Pumped	Estimated Hours	Yield (Acrefeet)	Approx. Yield Rate (gpm)
MC-1	Jan	34,428,750	703	105.7	816
	Feb	30,728,764	628	94.3	816
	Mar	32,885,835	672	100.9	816
	Apr	33,091,158	676	101.6	816
	May	32,921,625	672	101.0	816
	Jun	34,279,993	700	105.2	816
	Jul	34,194,107	698	104.9	816
	Aug	29,455,520	602	90.4	816
	Sep	34,557,996	706	106.1	816
	Oct	27,239,947	556	83.6	816
	Nov	30,990,804	633	95.1	816
	Dec	35,605,092	727	109.3	816

MC-1 Total Gallons Pumped:	390,387,591
MC-1 Total Acre-Feet Pumped:	1198
MC-1 Average Yield Rate (gpm):	816
MC-1 % Run Time:	91.0%

Well	Month	Gallons Pumped	Estimated Hours	Yield (Acrefeet)	Approx. Yield Rate (gpm)
MC-2	Jan	24,573,250	712	75.4	575
	Feb	22,018,359	638	67.6	575
	Mar	23,596,140	684	72.4	575
	Apr	23,649,815	686	72.6	575
	May	23,637,058	685	72.5	575
	Jun	21,280,304	617	65.3	575
	Jul	24,542,280	711	75.3	575
	Aug	20,740,530	601	63.7	575
	Sep	24,916,904	722	76.5	575
	Oct	21,706,651	629	66.6	575
	Nov	22,898,920	664	70.3	575
	Dec	25,044,002	726	76.9	575

MC-2 Total Gallons Pumped:	278,604,213
MC-2 Total Acre-Feet Pumped:	855
MC-2 Average Yield Rate (gpm):	575
MC-2 % Run Time:	92.2%



**ATTACHMENT A.  
SUMMARY OF 2020 INTERCEPTOR WELL PERFORMANCE  
FREEPORT MCMORAN SIERRITA, INC.**

Well	Month	Gallons Pumped	Estimated Hours	Yield (Acrefeet)	Approx. Yield Rate (gpm)
MC-3	Jan	17,124,750	630	52.6	453
	Feb	18,345,167	675	56.3	453
	Mar	19,236,398	708	59.0	453
	Apr	19,186,358	706	58.9	453
	May	18,605,407	685	57.1	453
	Jun	19,579,896	720	60.1	453
	Jul	19,609,504	721	60.2	453
	Aug	16,435,810	605	50.4	453
	Sep	19,625,346	722	60.2	453
	Oct	16,096,898	592	49.4	453
	Nov	17,099,256	629	52.5	453
	Dec	19,410,188	714	59.6	453

<b>MC-3 Total Gallons Pumped:</b>	<b>220,354,978</b>
<b>MC-3 Total Acre-Feet Pumped:</b>	<b>676</b>
<b>MC-3 Average Yield Rate (gpm):</b>	<b>453</b>
<b>MC-3 % Run Time:</b>	<b>92.5%</b>

Well	Month	Gallons Pumped	Estimated Hours	Yield (Acrefeet)	Approx. Yield Rate (gpm)
MC-4	Jan	19,734,500	744	60.6	442
	Feb	18,425,635	695	56.5	442
	Mar	17,624,429	665	54.1	442
	Apr	18,169,670	685	55.8	442
	May	17,435,217	657	53.5	442
	Jun	17,731,182	669	54.4	442
	Jul	17,787,165	671	54.6	442
	Aug	15,572,284	587	47.8	442
	Sep	16,966,557	640	52.1	442
	Oct	14,787,917	558	45.4	442
	Nov	13,382,479	505	41.1	442
	Dec	14,627,367	552	44.9	442

<b>MC-4 Total Gallons Pumped:</b>	<b>202,244,402</b>
<b>MC-4 Total Acre-Feet Pumped:</b>	<b>621</b>
<b>MC-4 Average Yield Rate (gpm):</b>	<b>442</b>
<b>MC-4 % Run Time:</b>	<b>87.1%</b>

Well	Month	Gallons Pumped	Estimated Hours	Yield (Acrefeet)	Approx. Yield Rate (gpm)
FFS-1	Jan	35,675,000	671	109.5	886
	Feb	29,542,719	556	90.7	886
	Mar	34,436,255	648	105.7	886
	Apr	29,744,610	560	91.3	886
	May	33,031,394	621	101.4	886
	Jun	33,027,214	621	101.4	886
	Jul	34,841,024	655	106.9	886
	Aug	31,047,401	584	95.3	886
	Sep	4,875,685	92	15.0	886
	Oct	5,358,739	101	16.4	886
	Nov	27,231,212	512	83.6	886
	Dec	35,735,519	672	109.7	886

<b>FFS-1 Total Gallons Pumped:</b>	<b>334,546,772</b>
<b>FFS-1 Total Acre-Feet Pumped:</b>	<b>1027</b>
<b>FFS-1 Average Yield Rate (gpm):</b>	<b>886</b>
<b>FFS-1 % Run Time:</b>	<b>71.8%</b>

Well	Month	Gallons Pumped	Estimated Hours	Yield (Acrefeet)	Approx. Yield Rate (gpm)
FFS-2	Jan	0	0	0.0	0
	Feb	14,165,039	270	43.5	875
	Mar	29,239,031	557	89.7	875
	Apr	30,278,060	577	92.9	875
	May	31,526,253	601	96.7	875
	Jun	31,743,202	605	97.4	875
	Jul	33,494,853	638	102.8	875
	Aug	31,831,571	606	97.7	875
	Sep	34,320,933	654	105.3	875
	Oct	31,444,329	599	96.5	875
	Nov	31,497,851	600	96.7	875
	Dec	35,137,731	669	107.8	875

<b>FFS-2 Total Gallons Pumped:</b>	<b>334,678,853</b>
<b>FFS-2 Total Acre-Feet Pumped:</b>	<b>1027</b>
<b>FFS-2 Average Yield Rate (gpm):</b>	<b>875</b>
<b>FFS-2 % Run Time:</b>	<b>72.8%</b>

Well	Month	Gallons Pumped	Estimated Hours	Yield (Acrefeet)	Approx. Yield Rate (gpm)
FFS-3	Jan	6,225,250	669	19.1	155
	Feb	6,447,572	693	19.8	155
	Mar	6,846,223	736	21.0	155
	Apr	5,770,134	620	17.7	155
	May	5,986,012	644	18.4	155
	Jun	5,173,084	556	15.9	155
	Jul	4,966,104	534	15.2	155
	Aug	3,741,311	402	11.5	155
	Sep	3,537,229	380	10.9	155
	Oct	1,443,304	155	4.4	155
	Nov	277,176	30	0.9	155
	Dec	514,601	55	1.6	155

<b>FFS-3 Total Gallons Pumped:</b>	<b>50,928,000</b>
<b>FFS-3 Total Acre-Feet Pumped:</b>	<b>156</b>
<b>FFS-3 Average Yield Rate (gpm):</b>	<b>155</b>
<b>FFS-3 % Run Time:</b>	<b>62.5%</b>

Well	Month	Gallons Pumped	Estimated Hours	Yield (Acrefeet)	Approx. Yield Rate (gpm)
FFS-4	Jan	2,607,375	690	8.0	63
	Feb	2,407,584	637	7.4	63
	Mar	2,804,889	742	8.6	63
	Apr	2,526,892	668	7.8	63
	May	2,806,847	743	8.6	63
	Jun	2,588,039	685	7.9	63
	Jul	2,569,525	680	7.9	63
	Aug	2,549,755	675	7.8	63
	Sep	2,516,203	666	7.7	63
	Oct	1,785,177	472	5.5	63
	Nov	1,588,299	420	4.9	63
	Dec	1,573,119	416	4.8	63

<b>FFS-4 Total Gallons Pumped:</b>	<b>28,323,704</b>
<b>FFS-4 Total Acre-Feet Pumped:</b>	<b>87</b>
<b>FFS-4 Average Yield Rate (gpm):</b>	<b>63</b>
<b>FFS-4 % Run Time:</b>	<b>85.5%</b>

Well	Month	Gallons Pumped	Estimated Hours	Yield (Acrefeet)	Approx. Yield Rate (gpm)
FFS-5	Jan	3,000	0	0.0	480
	Feb	0	0	0.0	0
	Mar	0	0	0.0	0
	Apr	0	0	0.0	0
	May	0	0	0.0	0
	Jun	0	0	0.0	0
	Jul	144	0	0.0	480
	Aug	7,522,165	261	23.1	480
	Sep	20,685,537	718	63.5	480
	Oct	16,827,297	584	51.6	480
	Nov	20,035,139	696	61.5	480
	Dec	21,087,375	732	64.7	480

<b>FFS-5 Total Gallons Pumped:</b>	<b>86,160,657</b>
<b>FFS-5 Total Acre-Feet Pumped:</b>	<b>264</b>
<b>FFS-5 Average Yield Rate (gpm):</b>	<b>480</b>
<b>FFS-5 % Run Time:</b>	<b>34.2%</b>

Well	Month	Gallons Pumped	Estimated Hours	Yield (Acrefeet)	Approx. Yield Rate (gpm)
FFS-6	Jan	0	0	0.0	0
	Feb	6,722	1	0.0	175
	Mar	0	0	0.0	0
	Apr	0	0	0.0	0
	May	0	0	0.0	0
	Jun	0	0	0.0	0
	Jul	0	0	0.0	0
	Aug	0	0	0.0	0
	Sep	0	0	0.0	0
	Oct	0	0	0.0	0
	Nov	0	0	0.0	0
	Dec	0	0	0.0	0

<b>FFS-6 Total Gallons Pumped:</b>	<b>6,722</b>
<b>FFS-6 Total Acre-Feet Pumped:</b>	<b>0</b>
<b>FFS-6 Average Yield Rate (gpm):</b>	<b>175</b>
<b>FFS-6 % Run Time:</b>	<b>0.0%</b>



ATTACHMENT B

---

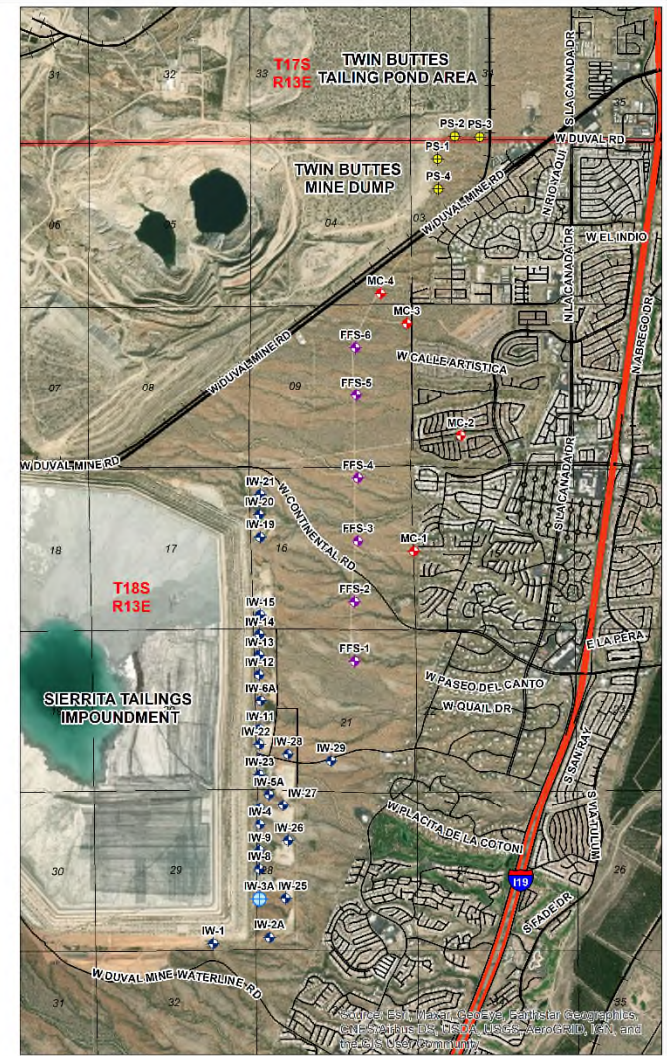
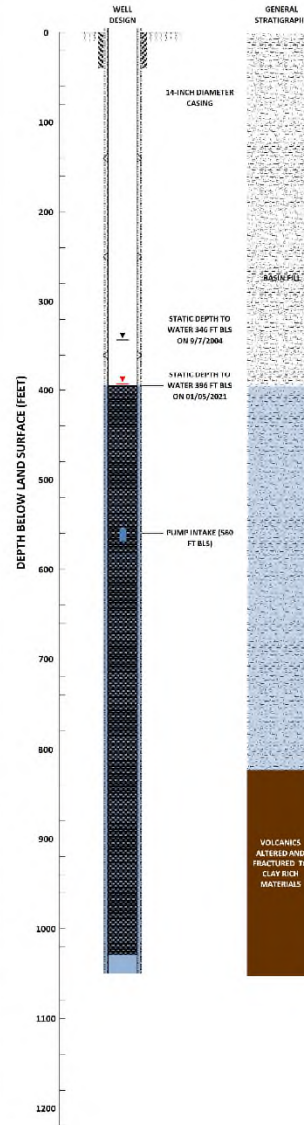
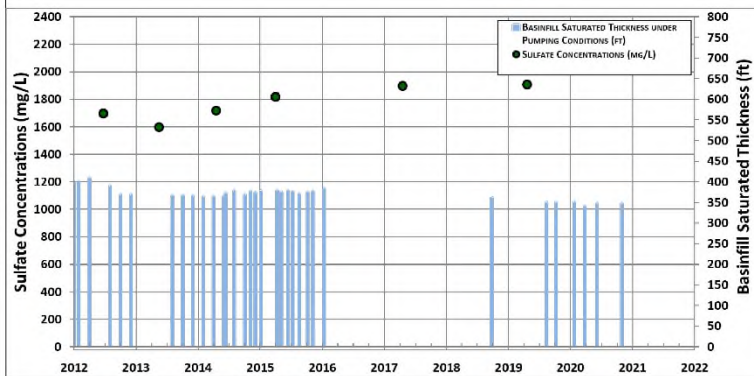
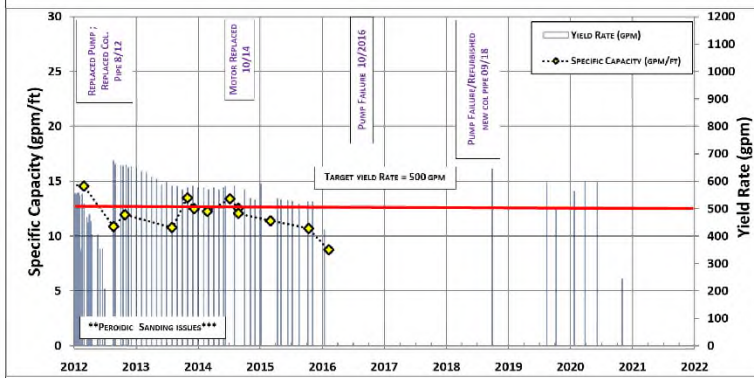
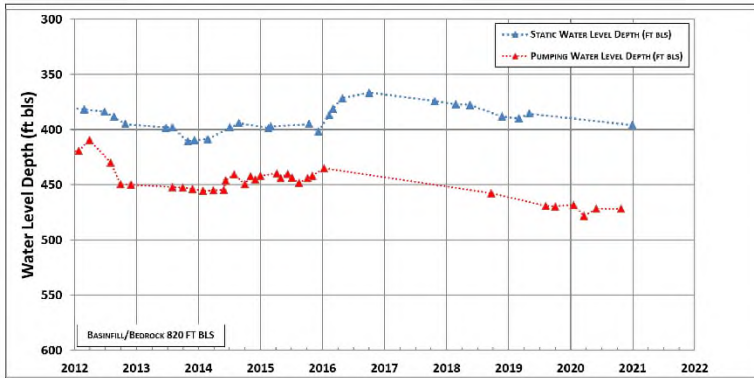
**SIERRITA SULFATE MITIGATION ACTION WELL FIELD WELL FIELD DATA PLOTS**









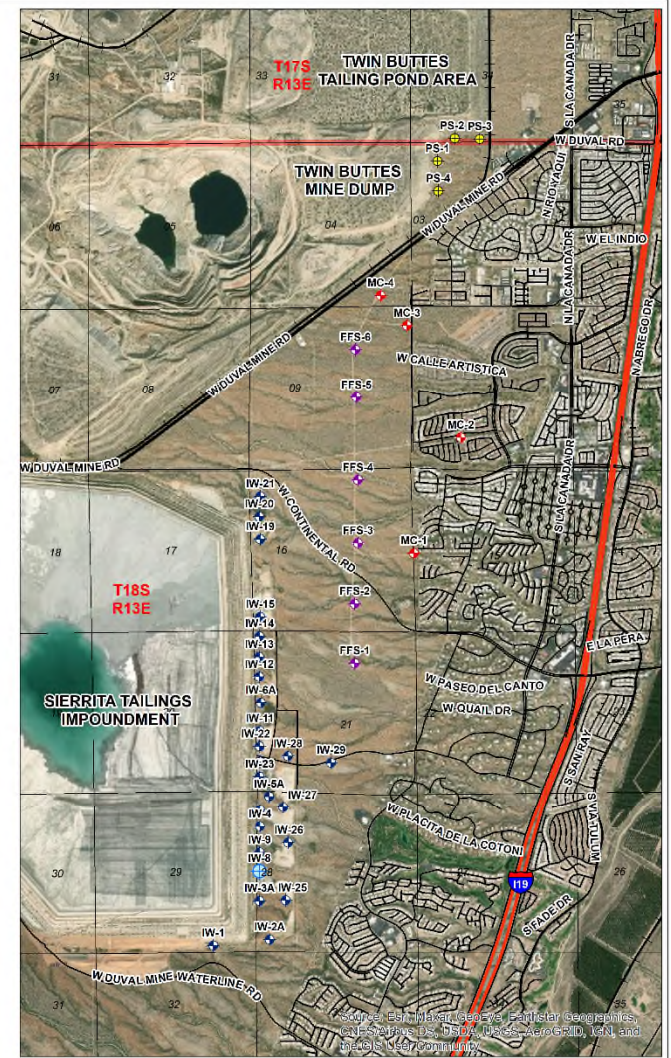
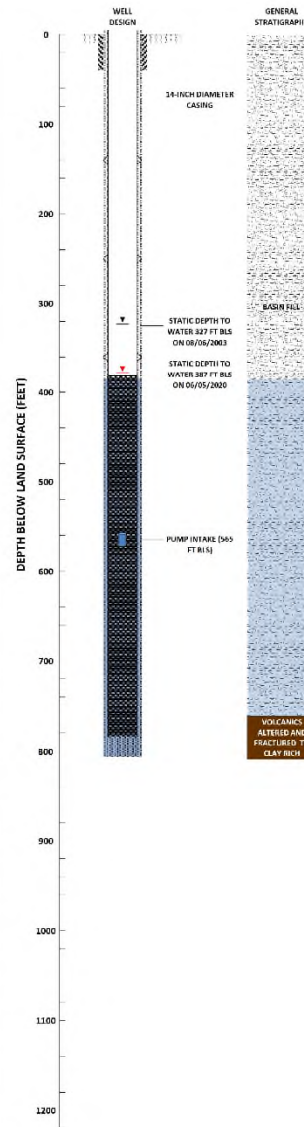
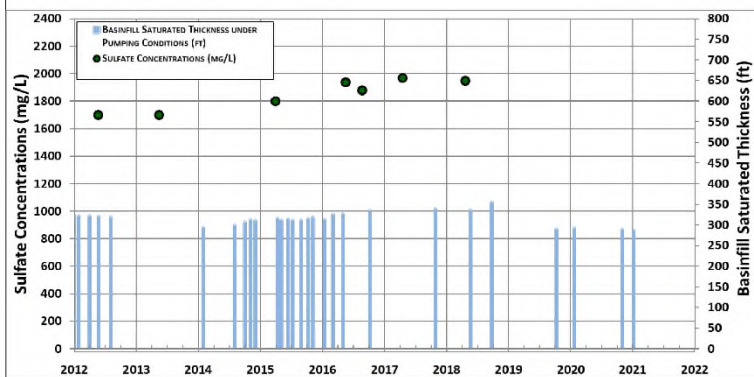
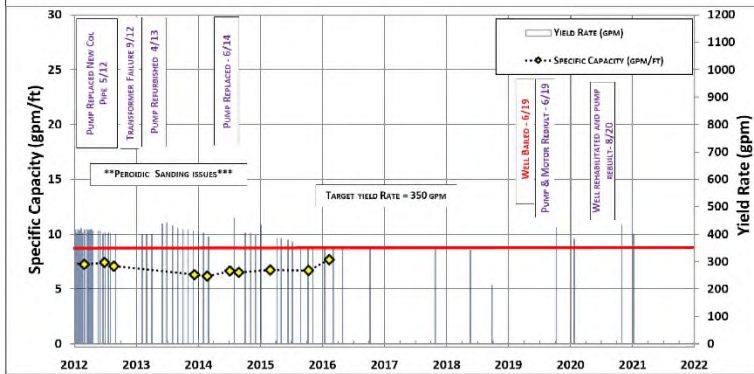
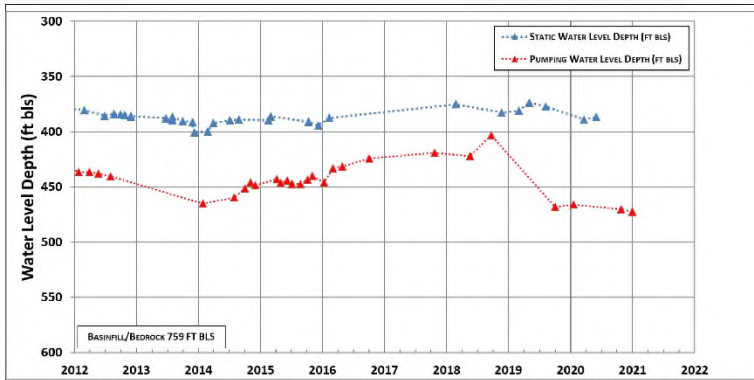


**BasinWells**  
ASSOCIATES PLLC  
SPECIALISTS IN GROUNDWATER DEVELOPMENT

**Freeport-McMoRan**  
COPPER & GOLD  
  
VERSION DATE:  
JANUARY, 2021

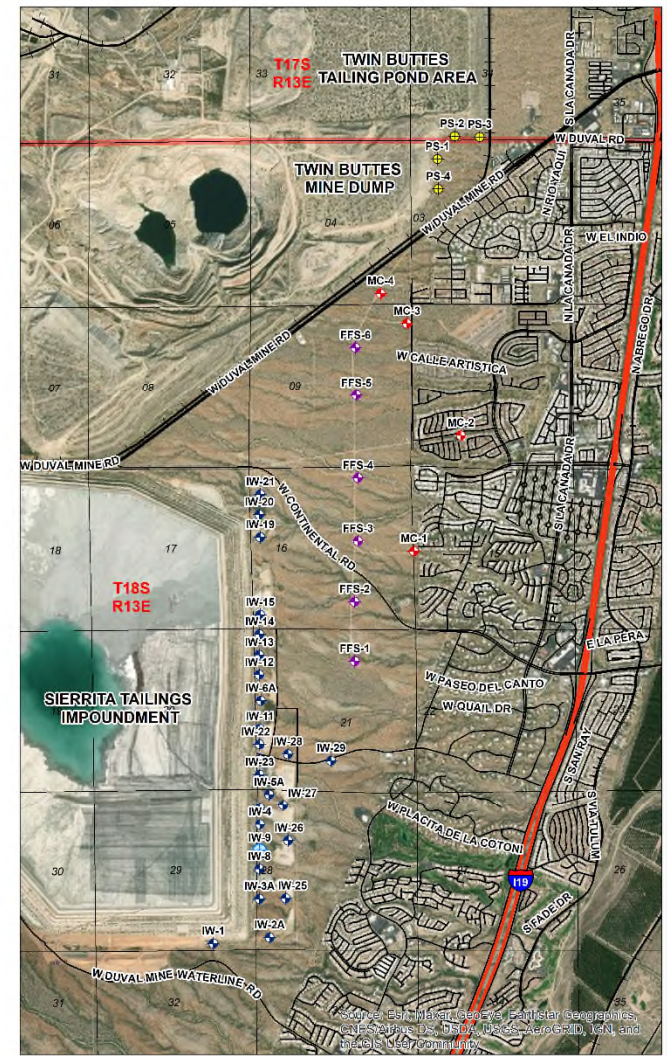
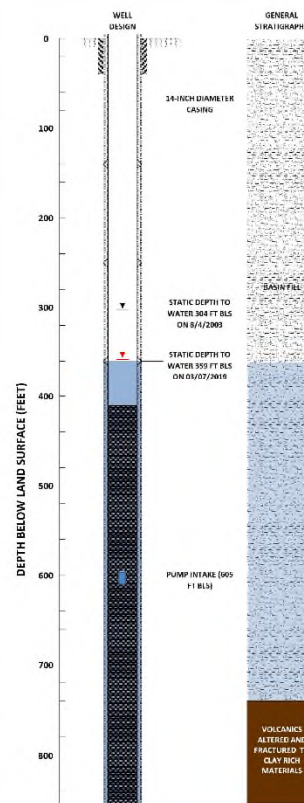
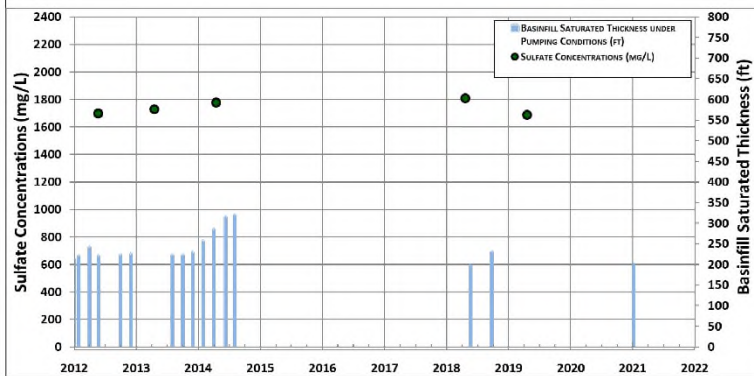
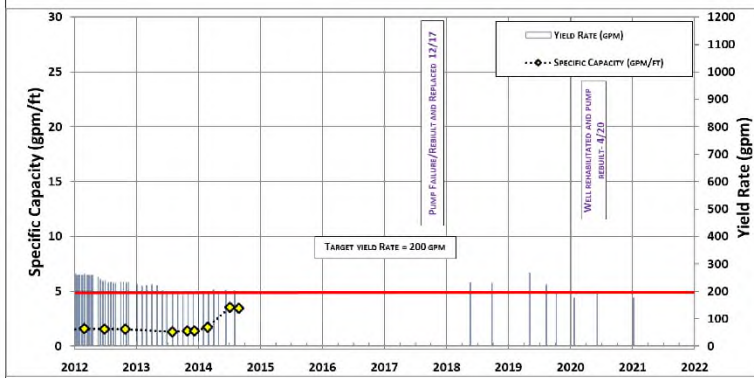
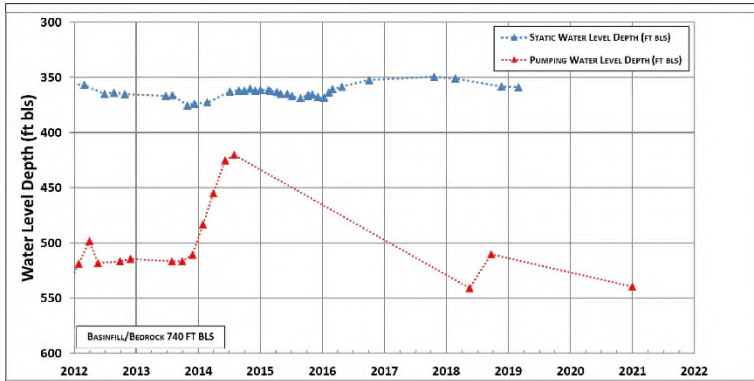
IW-3A: WATER LEVELS, YIELD, SPECIFIC CAPACITY, BASINFILL SAT. THK. AND SULFATE  
  
CADASTRAL: D-18-13 28CBC  
ADWR REG. NO.: 55-201732  
DRILL YEAR: 2004

**BasinWells Associates PLLC**



<p>SPECIALISTS IN GOVERNANCE AND DEVELOPMENT</p>		IW-8: WATER LEVELS, YIELD, SPECIFIC CAPACITY, BASINFILL SAT. THK. AND SULFATE
	<p><b>VERSION DATE:</b> <b>JANUARY, 2021</b></p>	CADASTRAL: D-18-13 28BCC ADWR REG. NO.: 55-508236 DRILL YEAR: 1984

**BasinWells Associates PLLC**

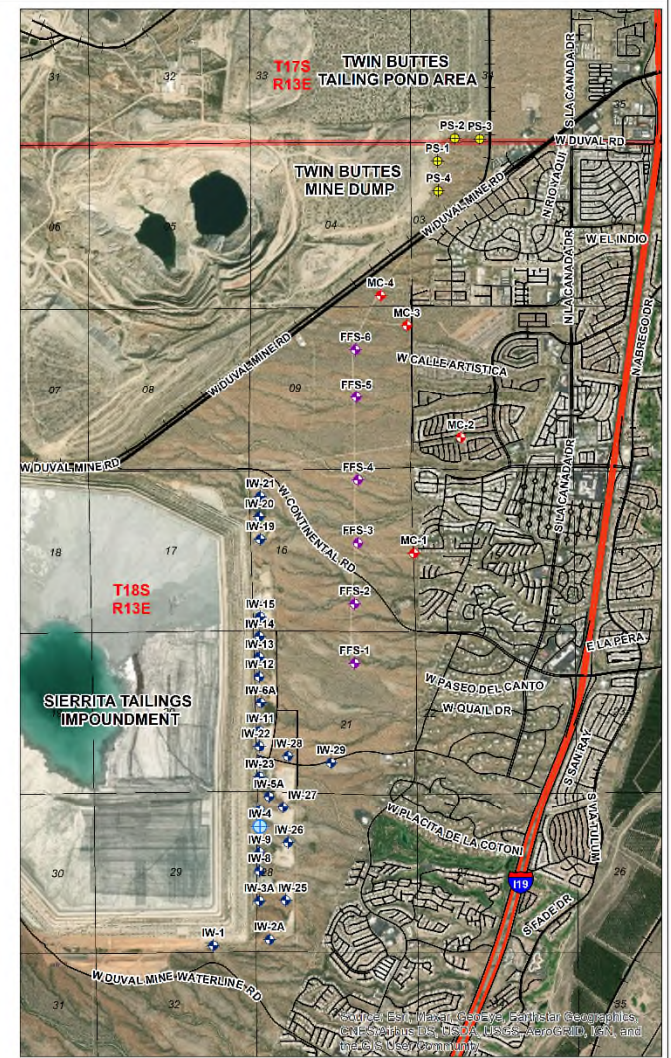
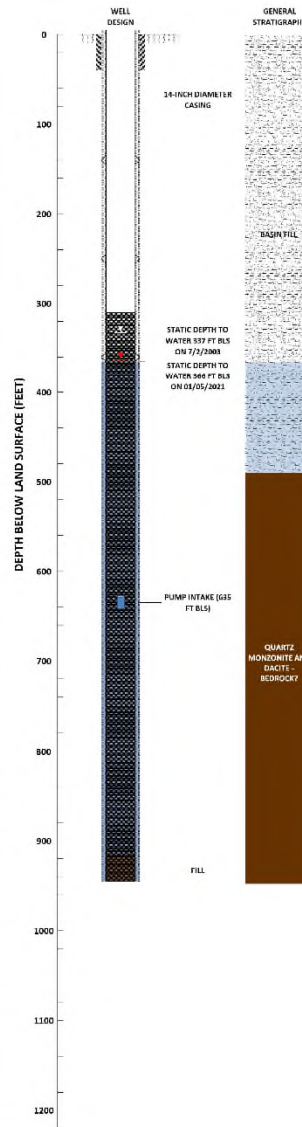
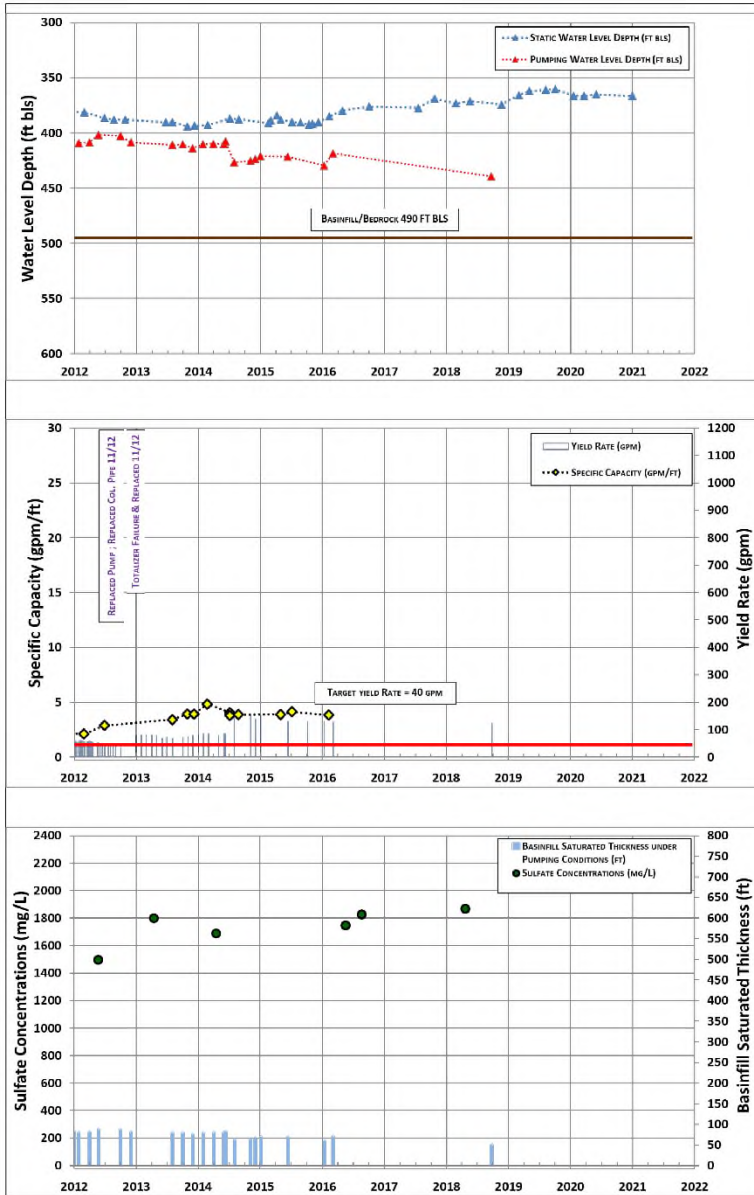


**BasinWells**  
ASSOCIATES PLLC  
SPECIALISTS IN GROUNDWATER DEVELOPMENT

**Freeport-McMoran**  
COPPER & GOLD  
  
VERSION DATE:  
JANUARY, 2021

IW-9: WATER LEVELS, YIELD,  
SPECIFIC CAPACITY, BASINFILL SAT.  
THK. AND SULFATE  
  
CADASTRAL: D-18-13 28BCC  
ADWR REG. NO.: 55-508238  
DRILL YEAR: 1984

**BasinWells Associates PLLC**



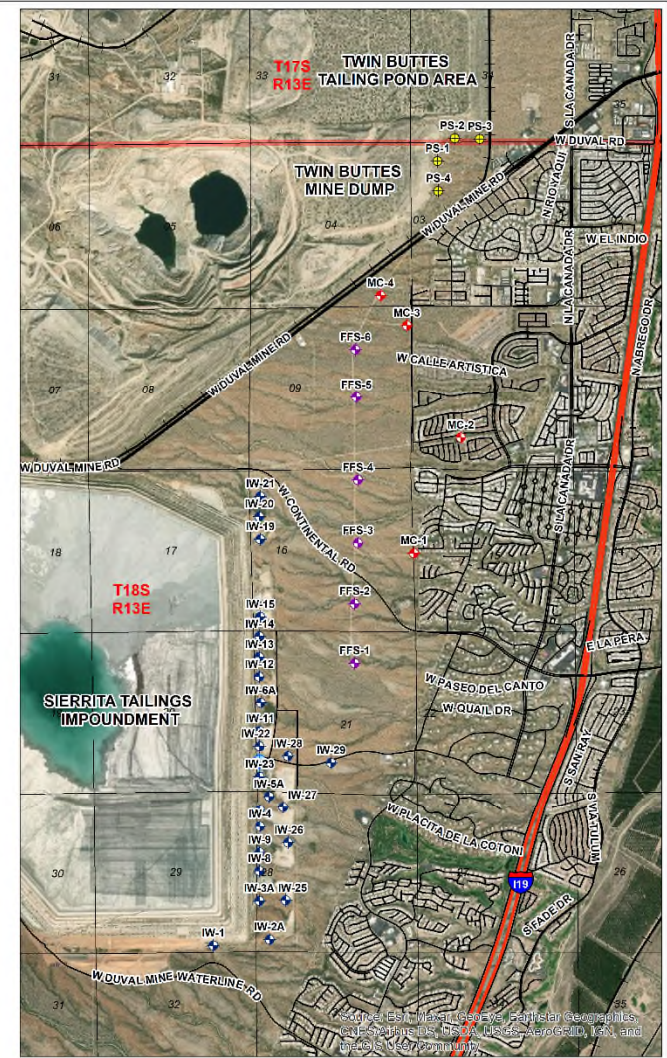
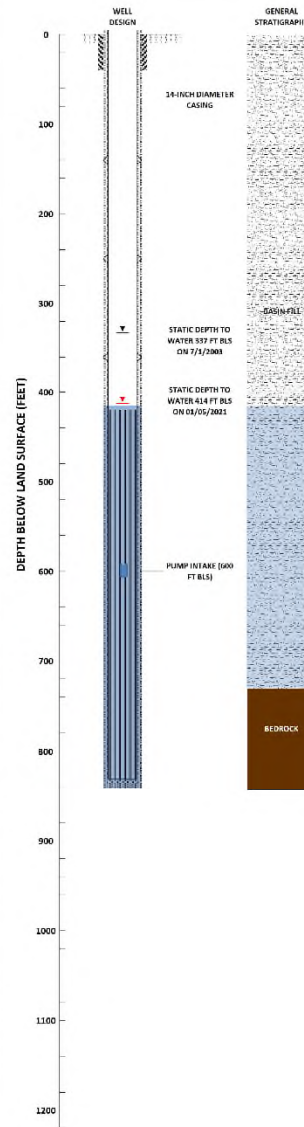
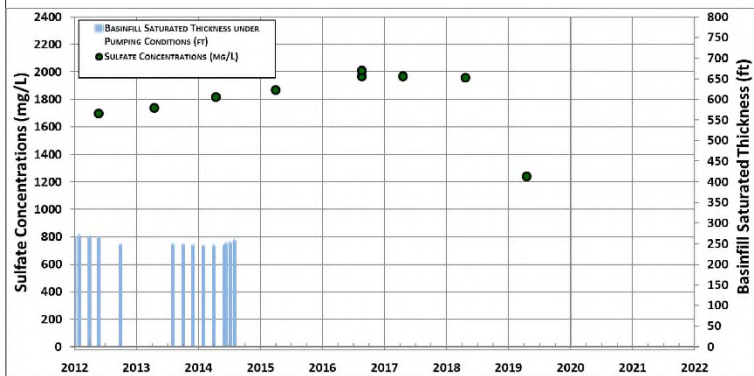
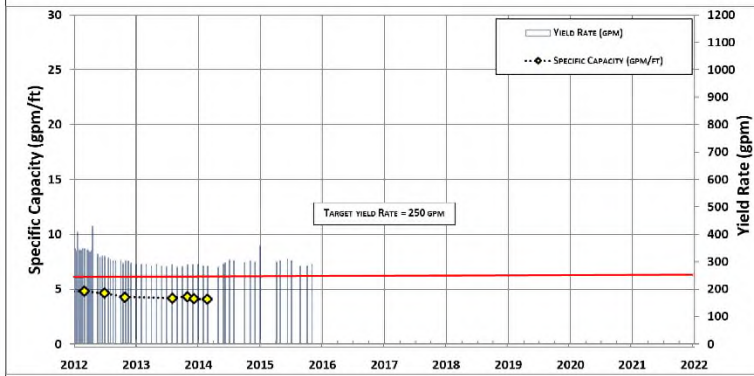
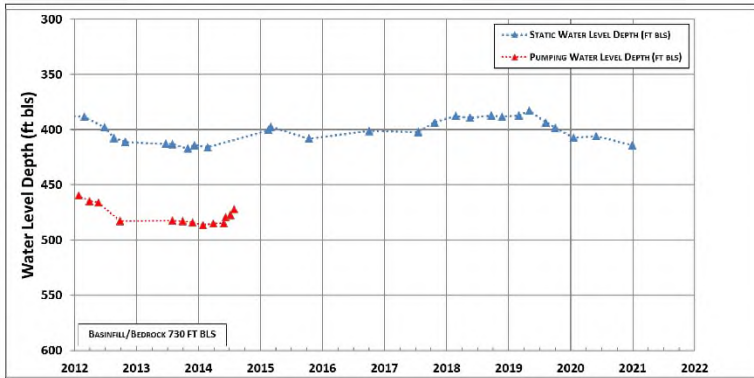
<p><b>BasinWells</b> ASSOCIATES PLLC <small>SPECIALISTS IN GOVERNANCE &amp; DEVELOPMENT</small></p>	<p><b>FREEPORT-McMoRAN</b> COPPER &amp; GOLD</p>	IW-4: WATER LEVELS, YIELD, SPECIFIC CAPACITY, BASINFILL SAT. THK. AND SULFATE  CADASTRAL: D-18-13 28BCB ADWR REG. NO.: 55-623132 DRILL YEAR: 1978
	<p><b>VERSION DATE:</b> JANUARY, 2021</p>	

**BasinWells Associates PLLC**









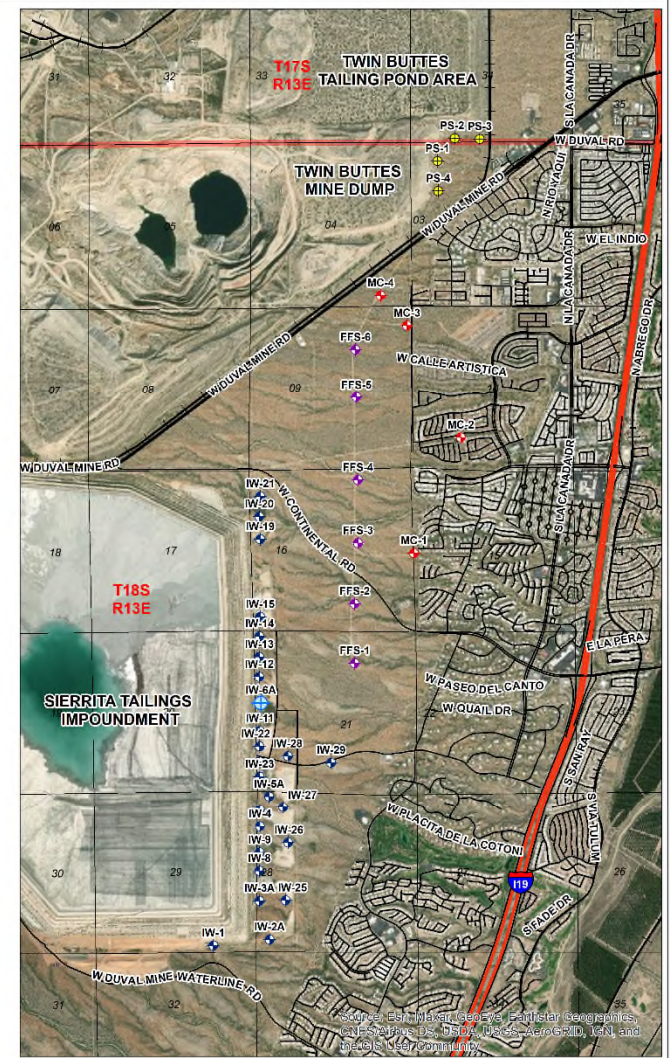
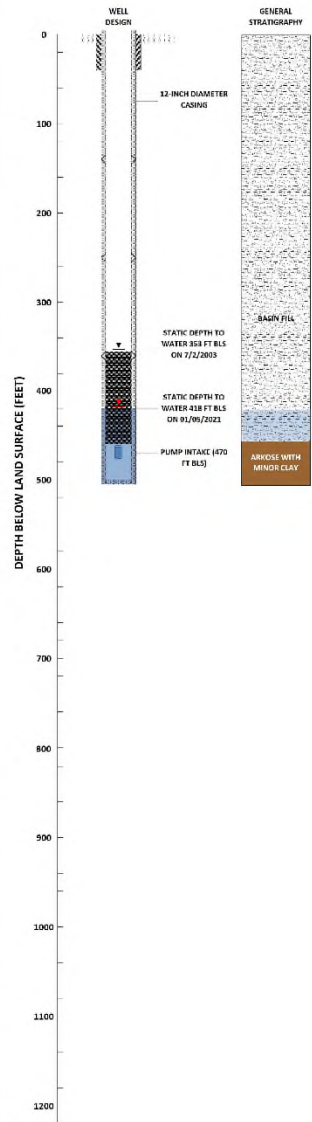
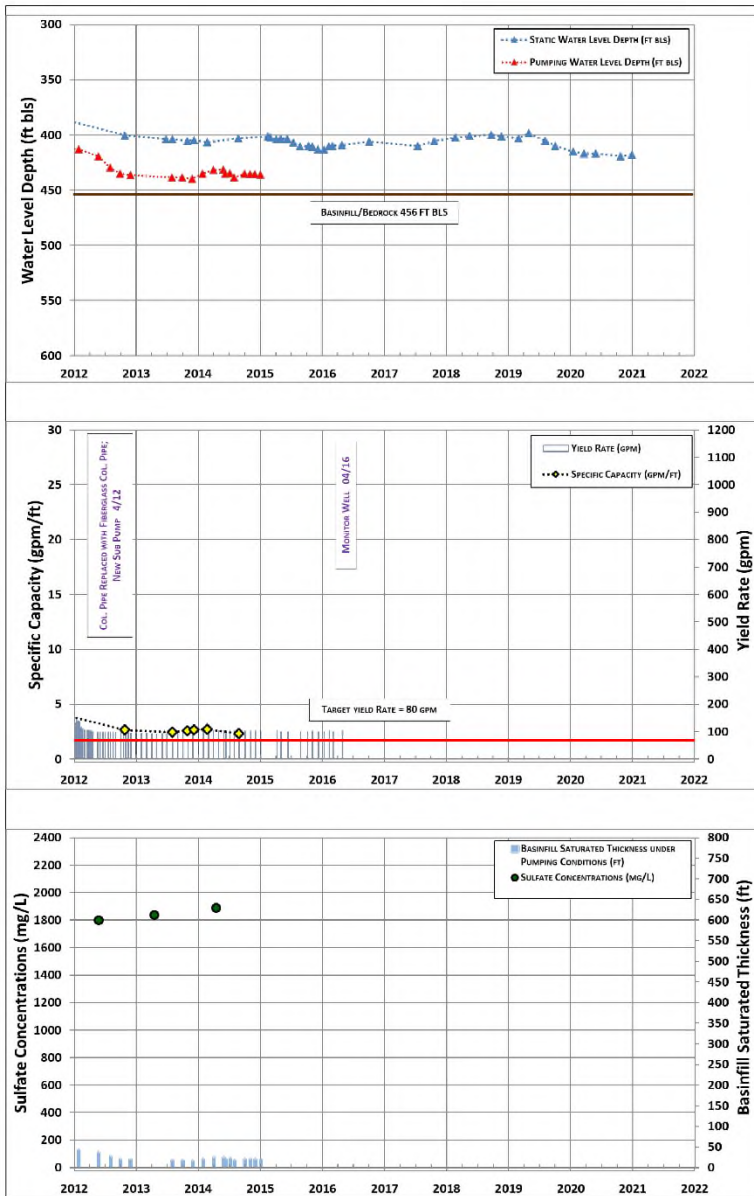
<p>SPECIALISTS IN GROUNDWATER DEVELOPMENT</p>		IW-10: WATER LEVELS, YIELD, SPECIFIC CAPACITY, BASINFILL SAT. THK. AND SULFATE
	<p><b>VERSION DATE:</b> <b>JANUARY, 2021</b></p>	CADASTRAL: D-18-13 21CBC ADWR REG. NO.: 55-508237 DRILL YEAR: 1984

**BasinWells Associates PLLC**









<p><b>BasinWells</b> ASSOCIATES PLLC SPECIALISTS IN GOVERNANCE &amp; DEVELOPMENT</p>	<p><b>FREEPORT-McMORAN</b> COPPER &amp; GOLD</p>	<p>IW-6A: WATER LEVELS, YIELD, SPECIFIC CAPACITY, BASINFILL SAT. THK. AND SULFATE</p>
	<p><b>VERSION DATE:</b> JANUARY, 2021</p>	<p>CADASTRAL: D-18-13 21BCC ADWR REG. NO.: 55-545565 DRILL YEAR: 1994</p>

**BasinWells Associates PLLC**





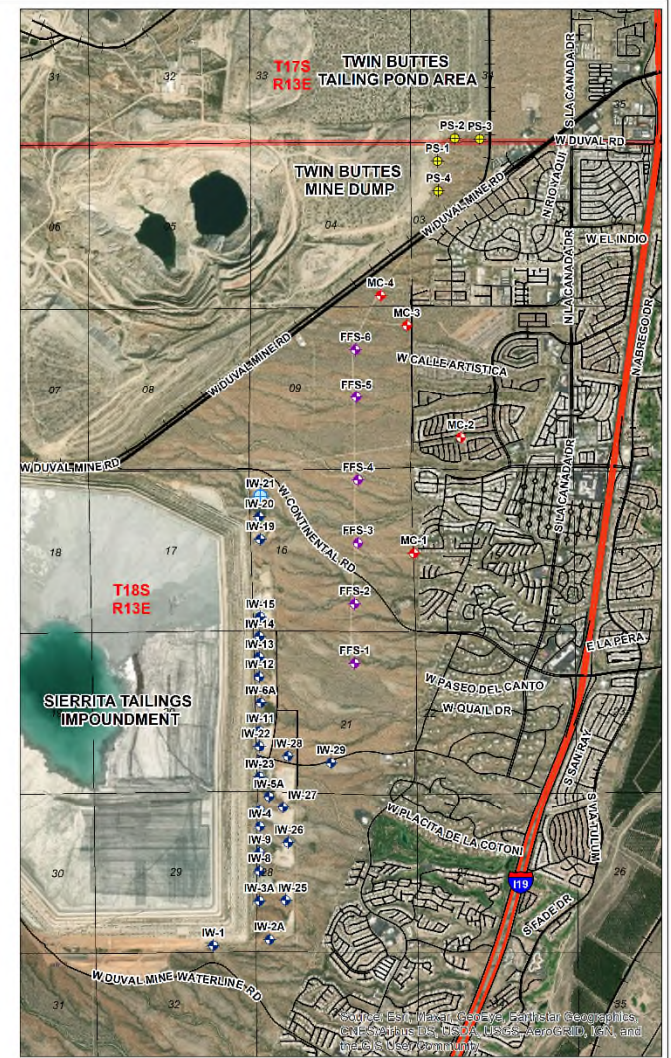
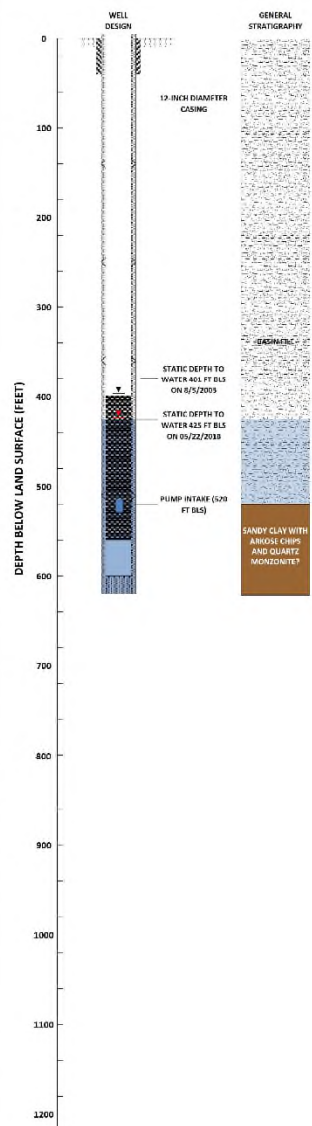
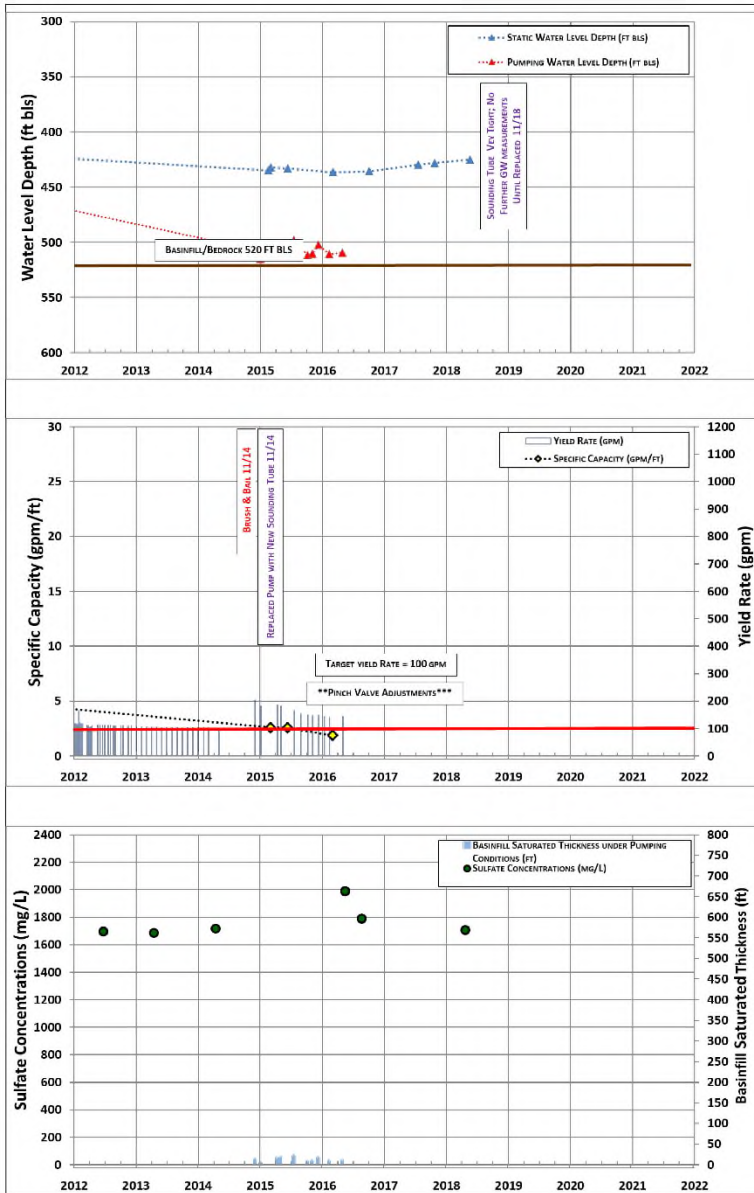












<p><b>BasinWells</b> ASSOCIATES PLLC <small>SPECIALISTS IN GROUNDWATER DEVELOPMENT</small></p>	<p><b>FREEPORT-McMoRAN</b> COPPER &amp; GOLD</p>	<p>IW-21: WATER LEVELS, YIELD, SPECIFIC CAPACITY, BASINFILL SAT. THK. AND SULFATE</p>
	<p><b>VERSION DATE:</b> JANUARY, 2021</p>	<p>CADASTRAL: D-18-13 16BBC ADWR REG. NO.: 55-545564 DRILL YEAR: 1995</p>

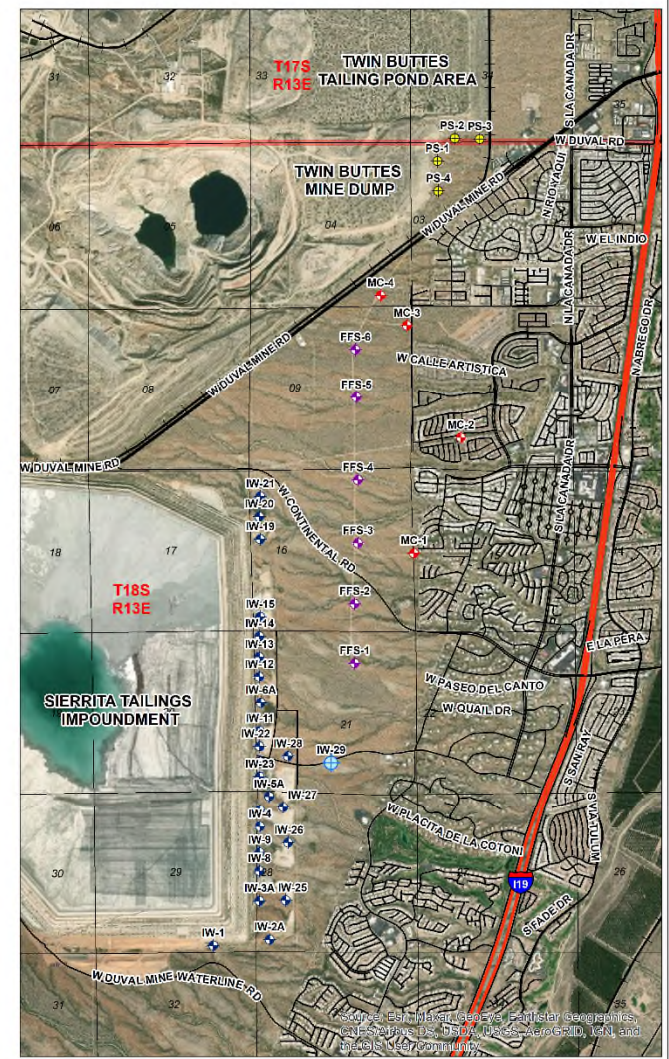
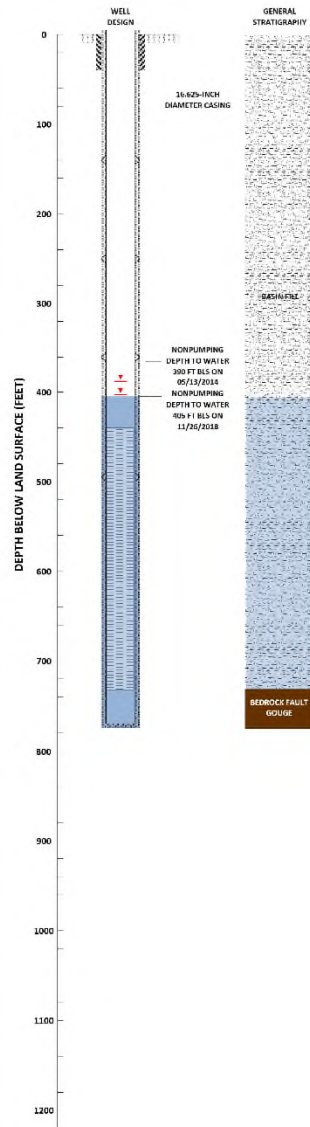
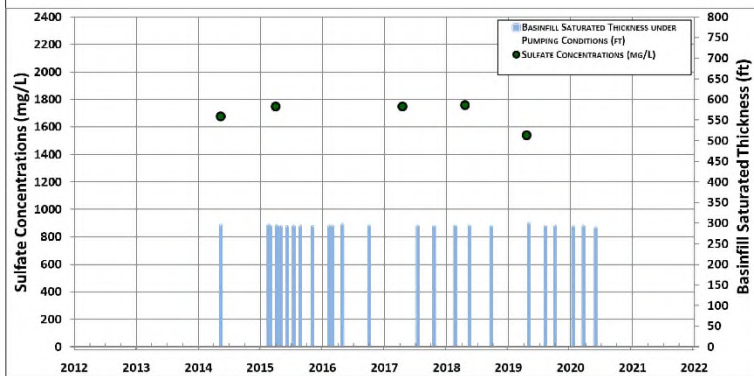
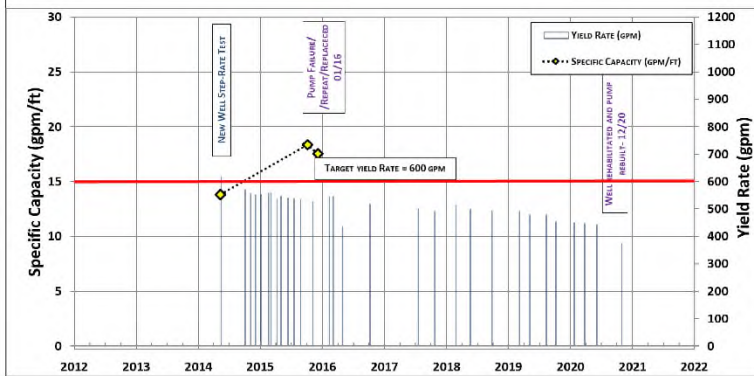
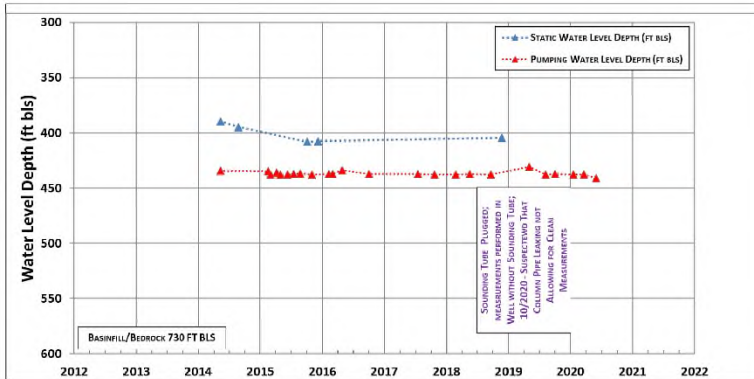
**BasinWells Associates PLLC**











<p>SPECIALISTS IN GROUNDWATER DEVELOPMENT</p>		IW-29: WATER LEVELS, YIELD, SPECIFIC CAPACITY, BASINFILL SAT. THK. AND SULFATE
	<p><b>VERSION DATE:</b> JANUARY, 2021</p>	CADASTRAL: D-18-13 21CDA ADWR REG. NO.: 55-222865 DRILL YEAR: 2014

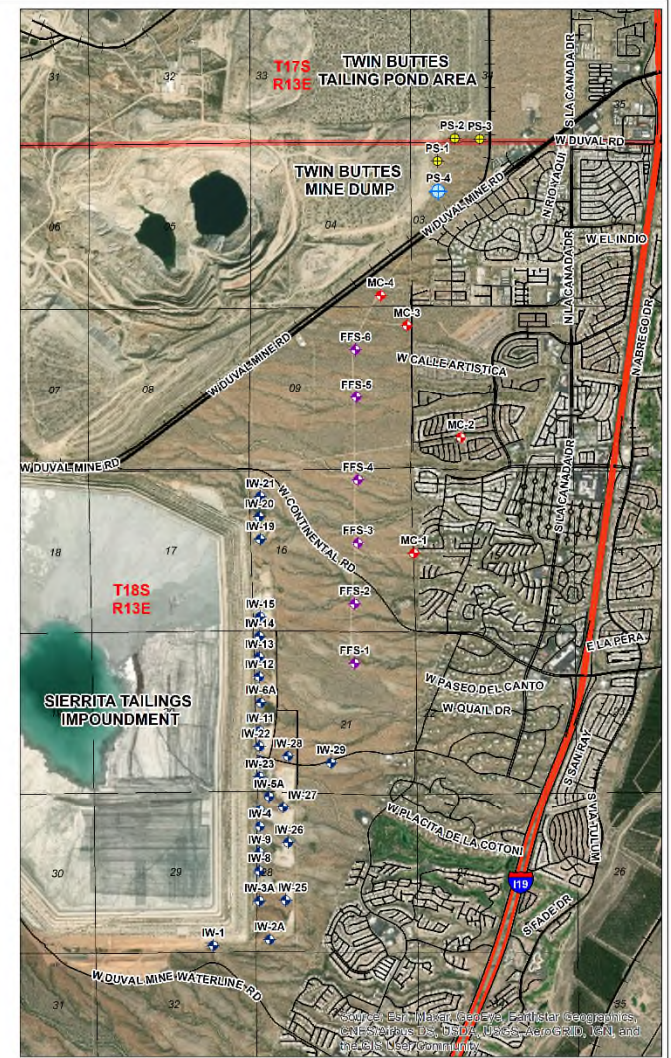
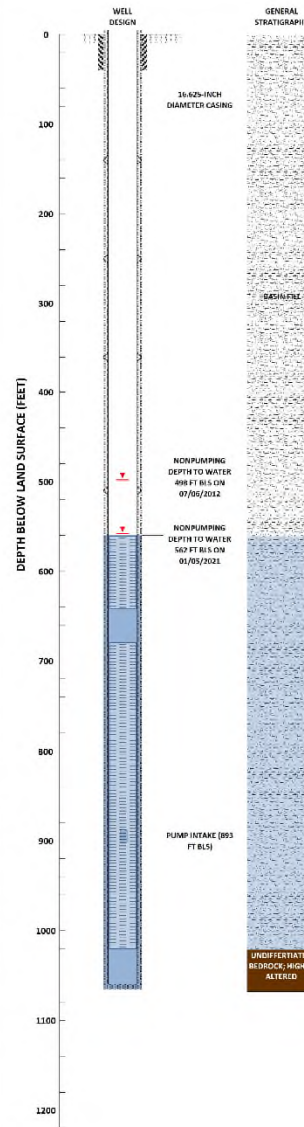
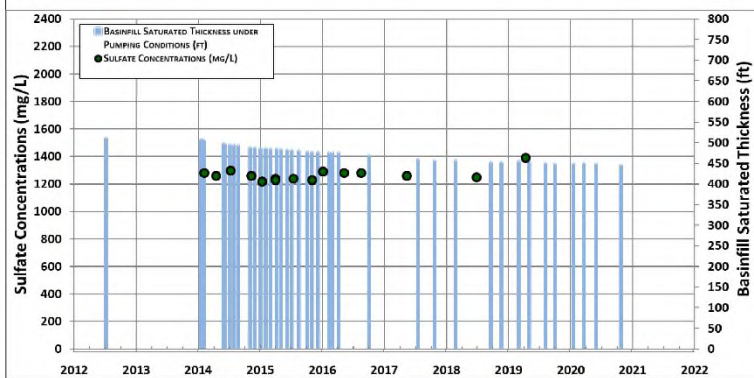
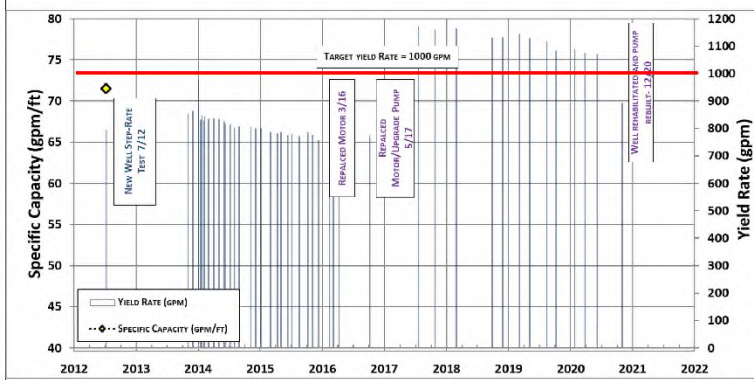
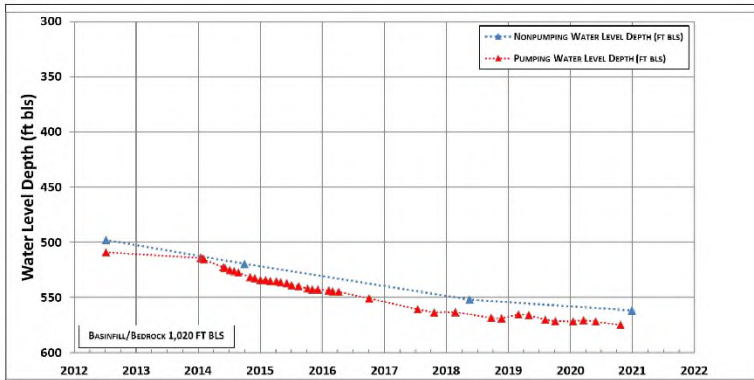
**BasinWells Associates PLLC**









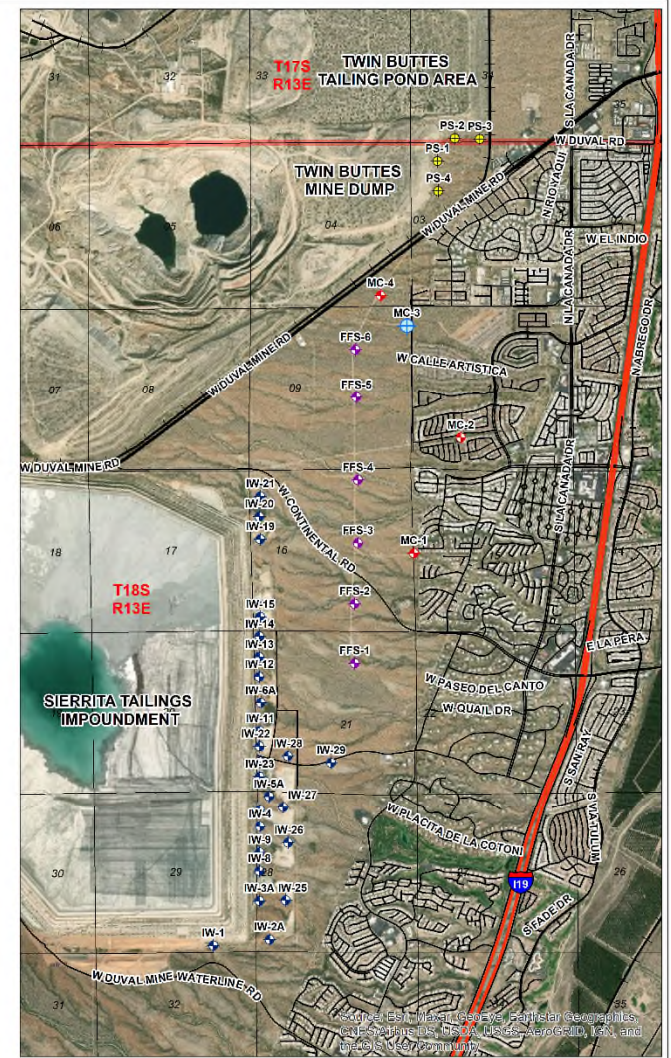
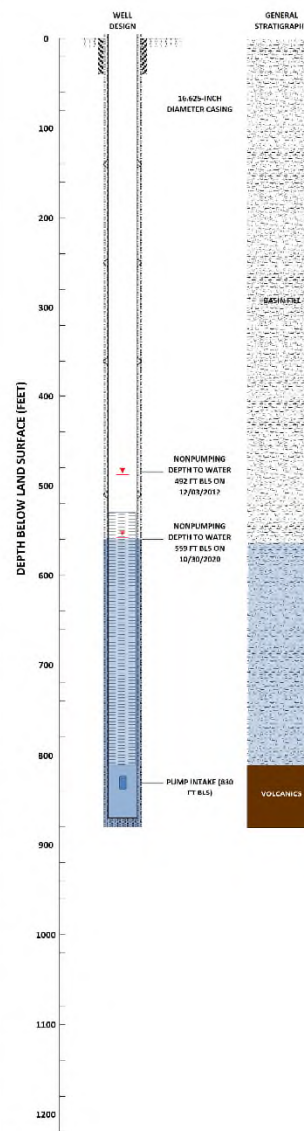
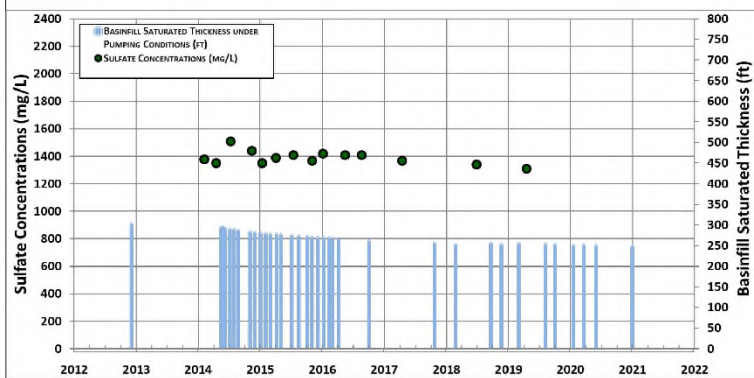
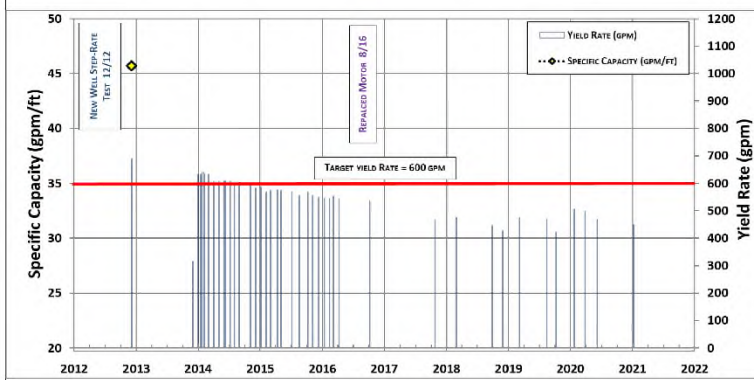
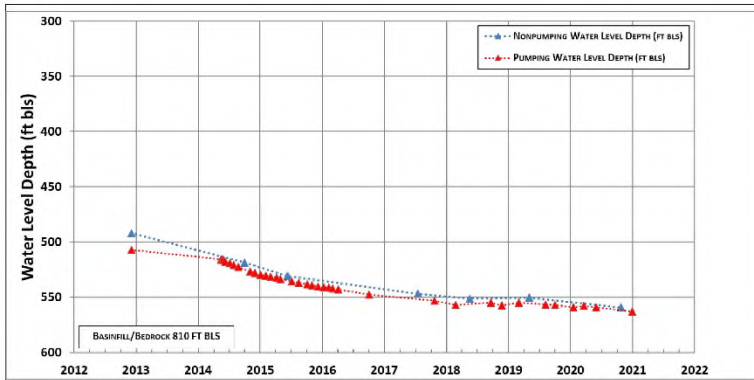


<p>SPECIALISTS IN GROUNDWATER DEVELOPMENT</p>		PS-4: WATER LEVELS, YIELD, SPECIFIC CAPACITY, BASINFILL SAT. THK. AND SULFATE
	<p><b>VERSION DATE:</b> JANUARY, 2021</p>	CADASTRAL: D-18-13 03BCA ADWR REG. NO.: 55-220864 DRILL YEAR: 2012

**BasinWells Associates PLLC**

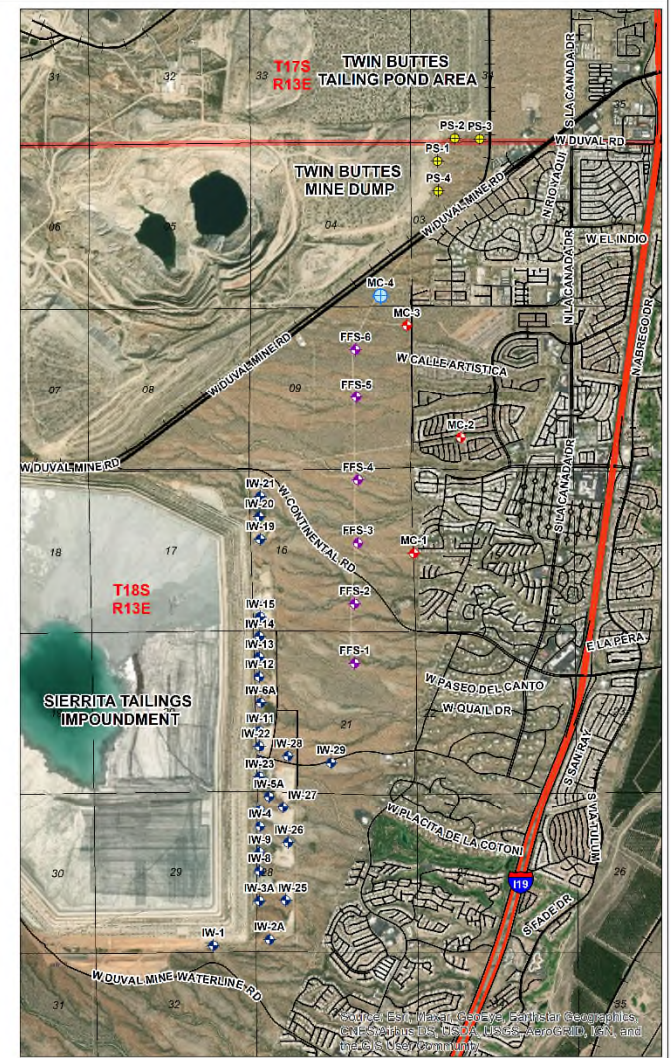
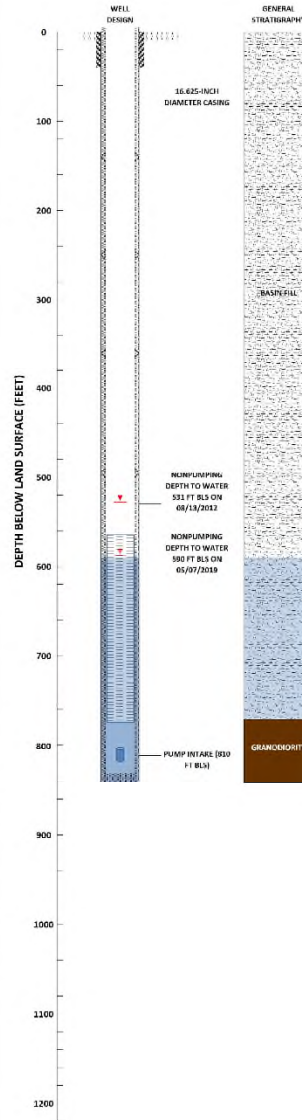
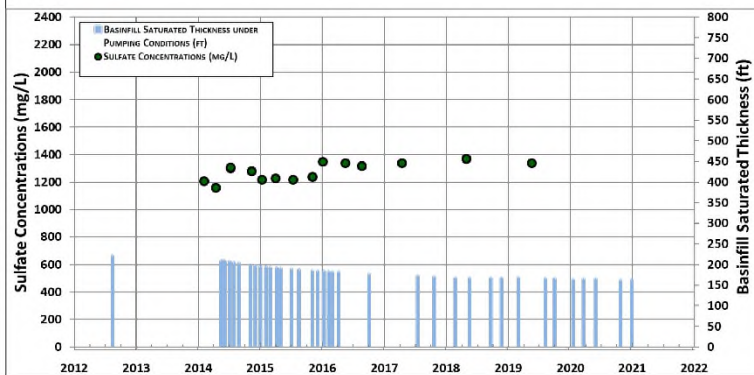
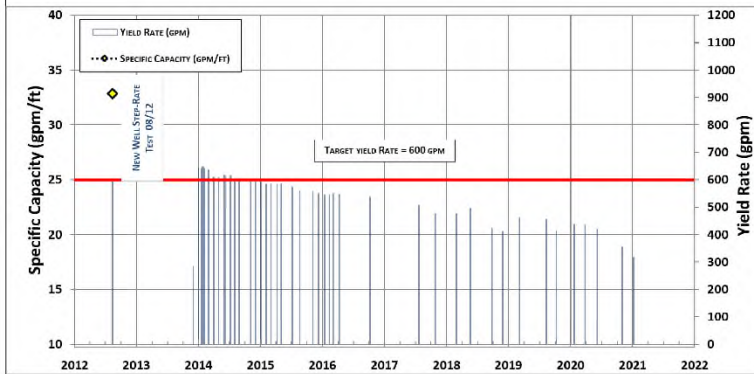
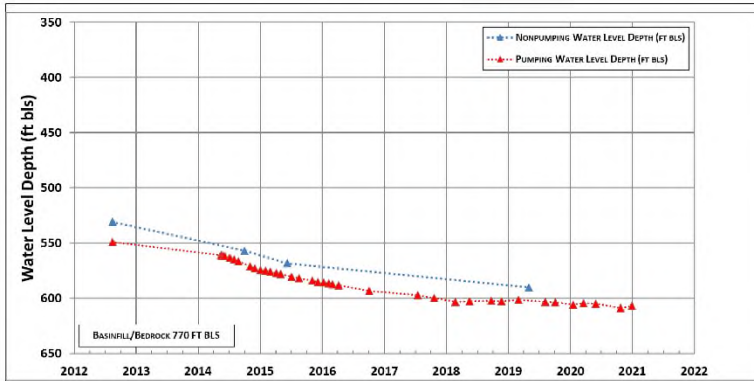






<p><b>BasinWells</b> ASSOCIATES PLLC <small>SPECIALISTS IN GOVERNANCE AND DEVELOPMENT</small></p>	<p><b>FREEPORT-McMORAN</b> COPPER &amp; GOLD</p>	<p>MC-3: WATER LEVELS, YIELD, SPECIFIC CAPACITY, BASINFILL SAT. THK. AND SULFATE</p>
	<p><b>VERSION DATE:</b> JANUARY, 2021</p>	<p>CADASTRAL: D-18-13 09AAA ADWR REG. NO.: 55-221661 DRILL YEAR: 2012</p>

**BasinWells Associates PLLC**

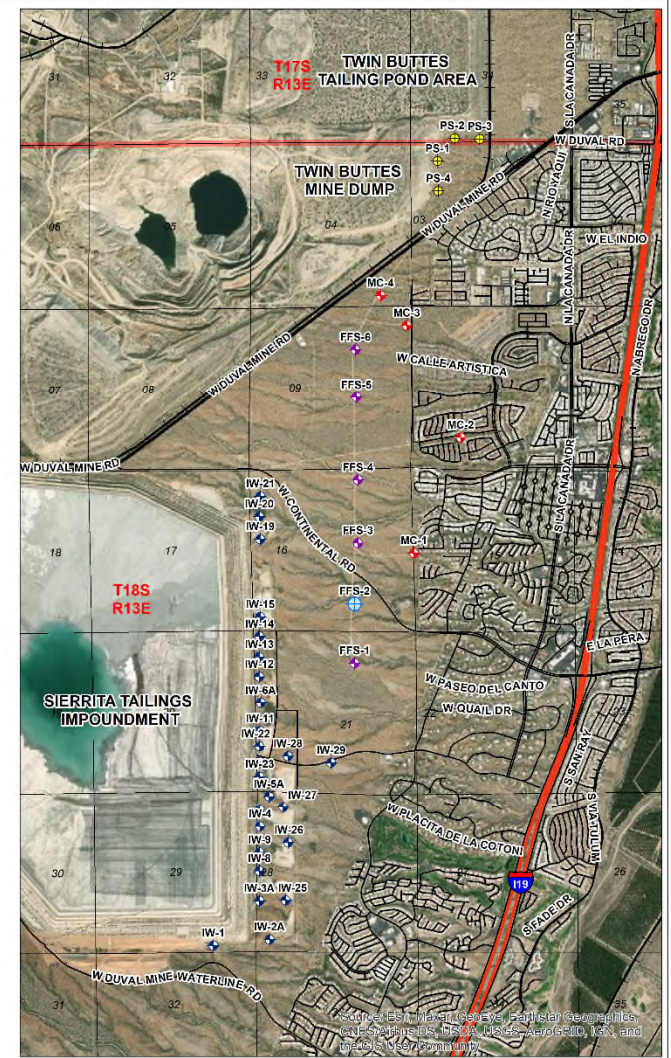
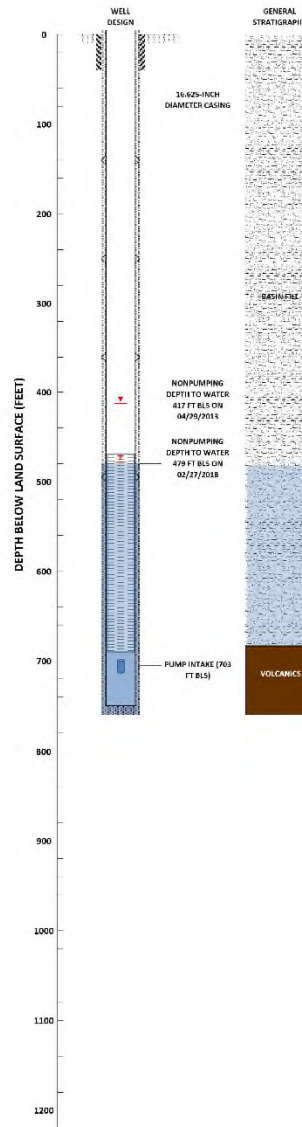
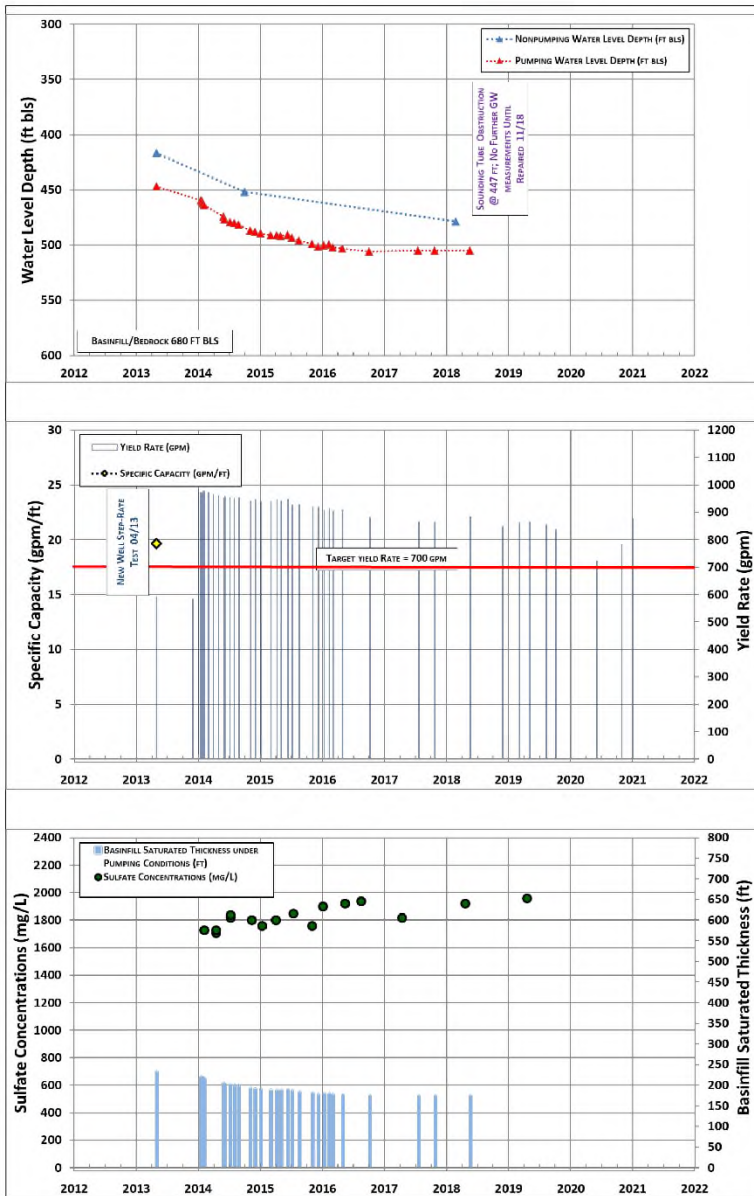


<p>SPECIALISTS IN GOVERNANCE AND DEVELOPMENT</p>		MC-4: WATER LEVELS, YIELD, SPECIFIC CAPACITY, BASINFILL SAT. THK. AND SULFATE
	<p><b>VERSION DATE:</b> <b>JANUARY, 2021</b></p>	CADASTRAL: D-18-13 04DDC ADWR REG. NO.: 55-220842 DRILL YEAR: 2012

**BasinWells Associates PLLC**





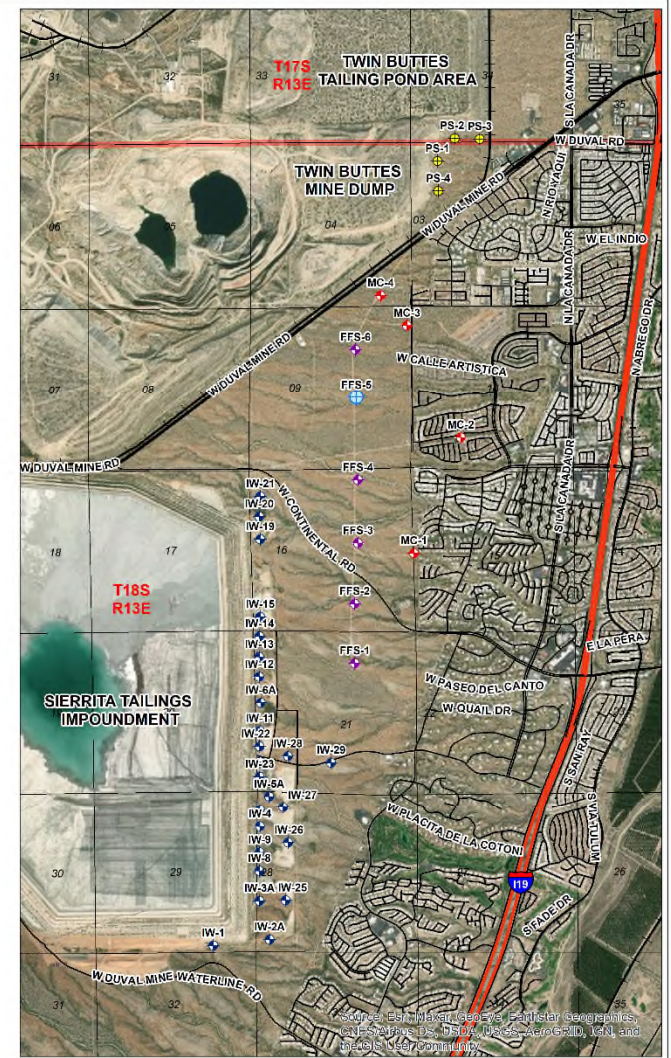
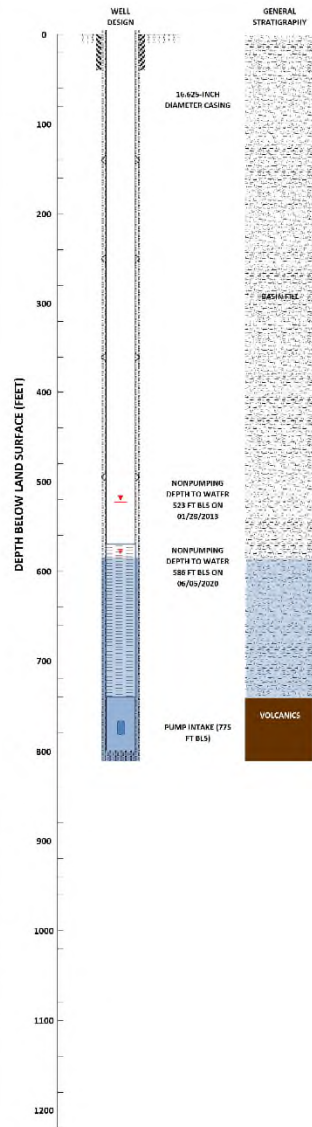
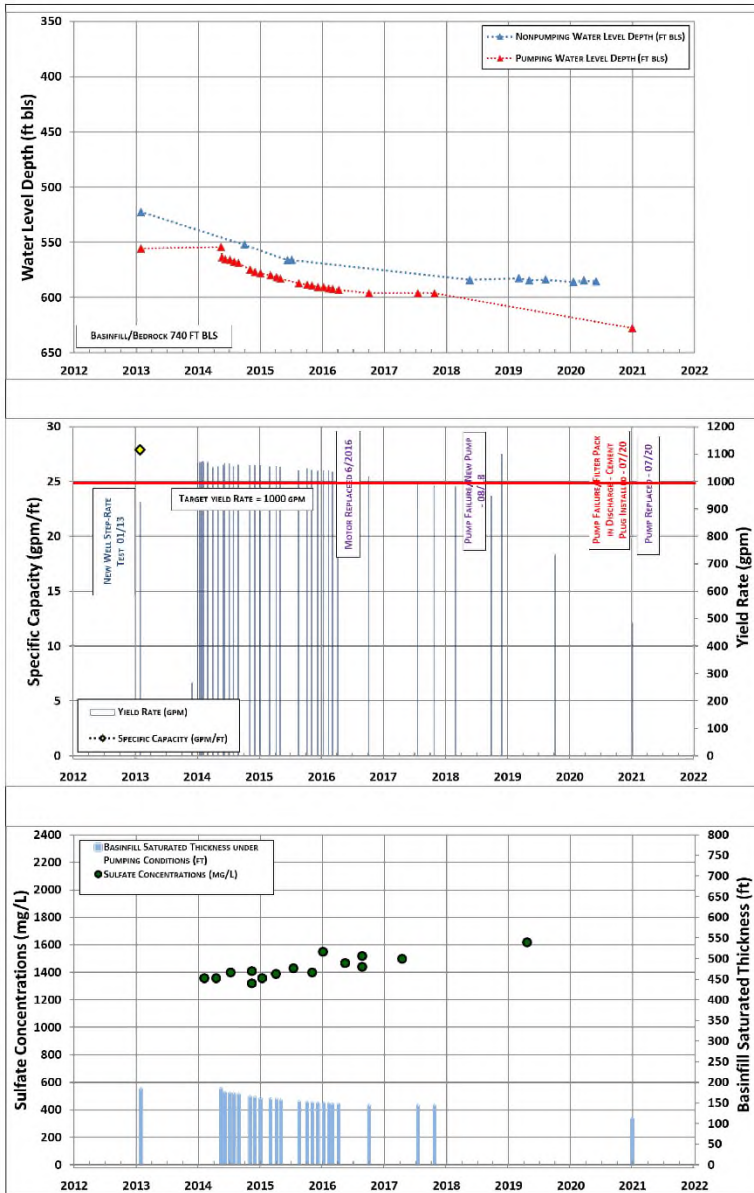


<p><b>BasinWells</b> ASSOCIATES PLLC <small>SPECIALISTS IN GOVERNANCE DEVELOPMENT</small></p>	<p><b>FREEPORT-McMORAN</b> COPPER &amp; GOLD</p>	<p>FFS-2: WATER LEVELS, YIELD, SPECIFIC CAPACITY, BASINFILL SAT. THK. AND SULFATE</p>
	<p><b>VERSION DATE:</b> JANUARY, 2021</p>	<p>CADASTRAL: D-18-13 16DCA ADWR REG. NO.: 55-221663 DRILL YEAR: 2013</p>

**BasinWells Associates PLLC**







<p><b>BasinWells</b> ASSOCIATES PLLC <small>SPECIALISTS IN GROUNDWATER DEVELOPMENT</small></p>	<p><b>FREEPORT-McMORAN</b> COPPER &amp; GOLD</p>	<p>FFS-5: WATER LEVELS, YIELD, SPECIFIC CAPACITY, BASINFILL SAT. THK. AND SULFATE</p>
	<p><b>VERSION DATE:</b> JANUARY, 2021</p>	<p>CADASTRAL: D-18-13 09DBA ADWR REG. NO.: 55-221666 DRILL YEAR: 2012</p>

**BasinWells Associates PLLC**

